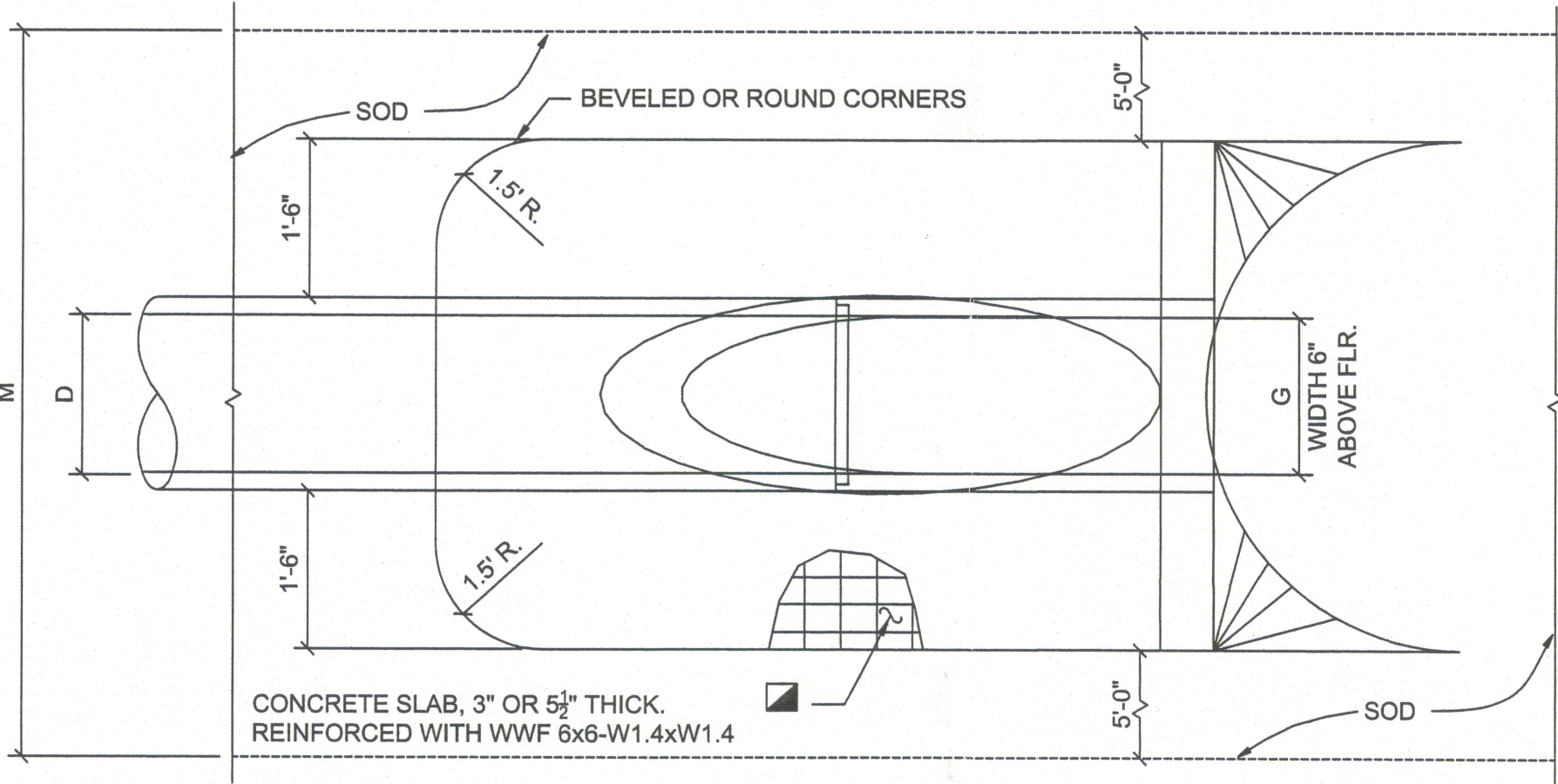
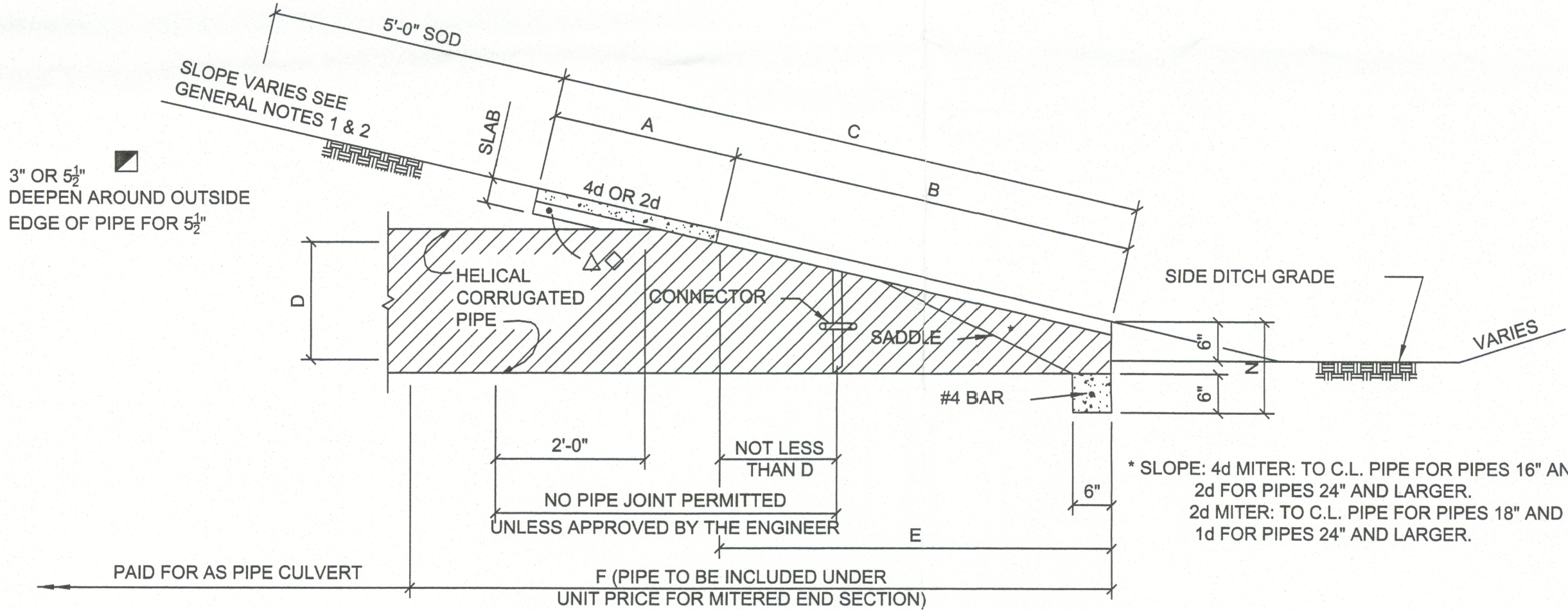


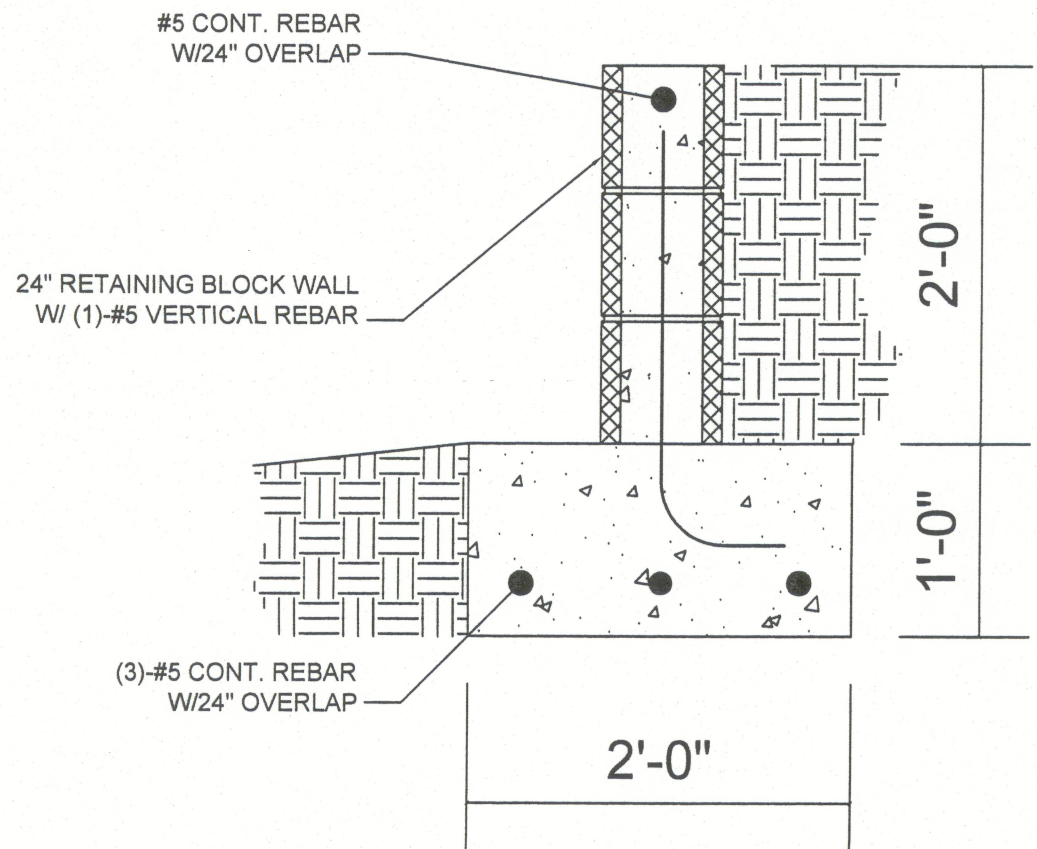
DIMENSIONS AND QUANTITIES												
4d SLOPE	D	X	A	B	C	E	F	G	M	N	CONC. (cy)	
									SINGLE		SINGLE	SINGLE
									PIPE		PIPE	PIPE
	15"	2'-7"	2.5'	3.09'	5.58'	3.0'	7'	1.23'	4.33'	1.04'	0.44	22
	18"	2'-10"	2.5'	4.12'	6.62'	4.0'	8'	1.41'	4.58'	1.04'	0.49	24
	24"	3'-5"	2.5'	6.18'	8.68'	6.0'	10'	1.73'	5.08'	1.04'	0.65	27
	36"	5'-1"	2.5'	10.31'	12.81'	10.0'	14'	2.24'	6.08'	1.04'	0.97	32



TOP VIEW - SINGLE PIPE  
SCALE: N.T.S.



SECTION  
SCALE: N.T.S.

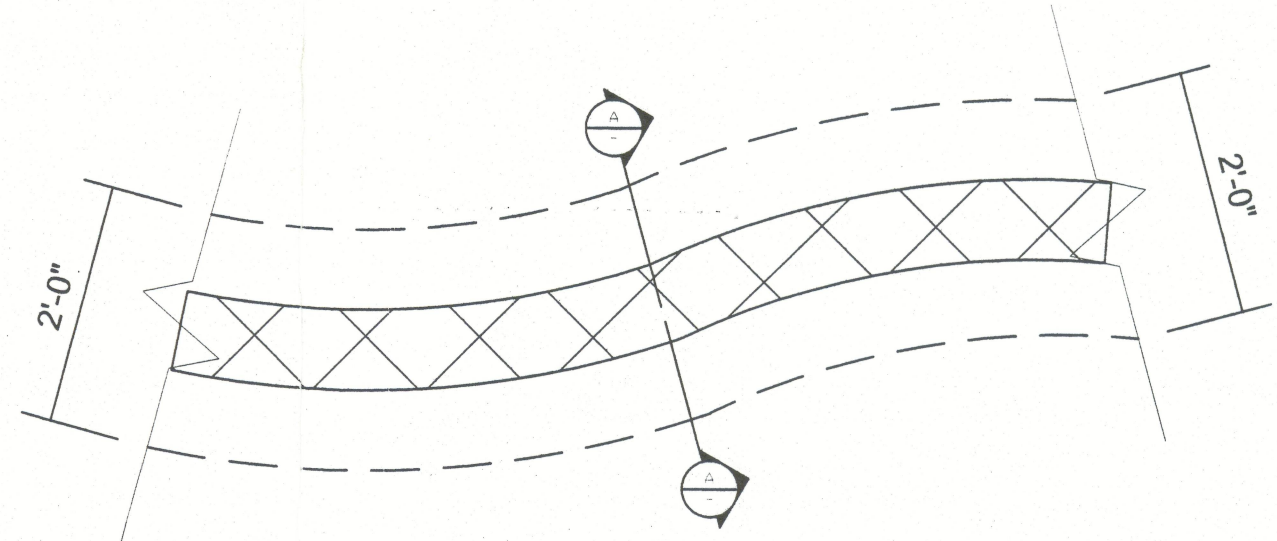


SECTION

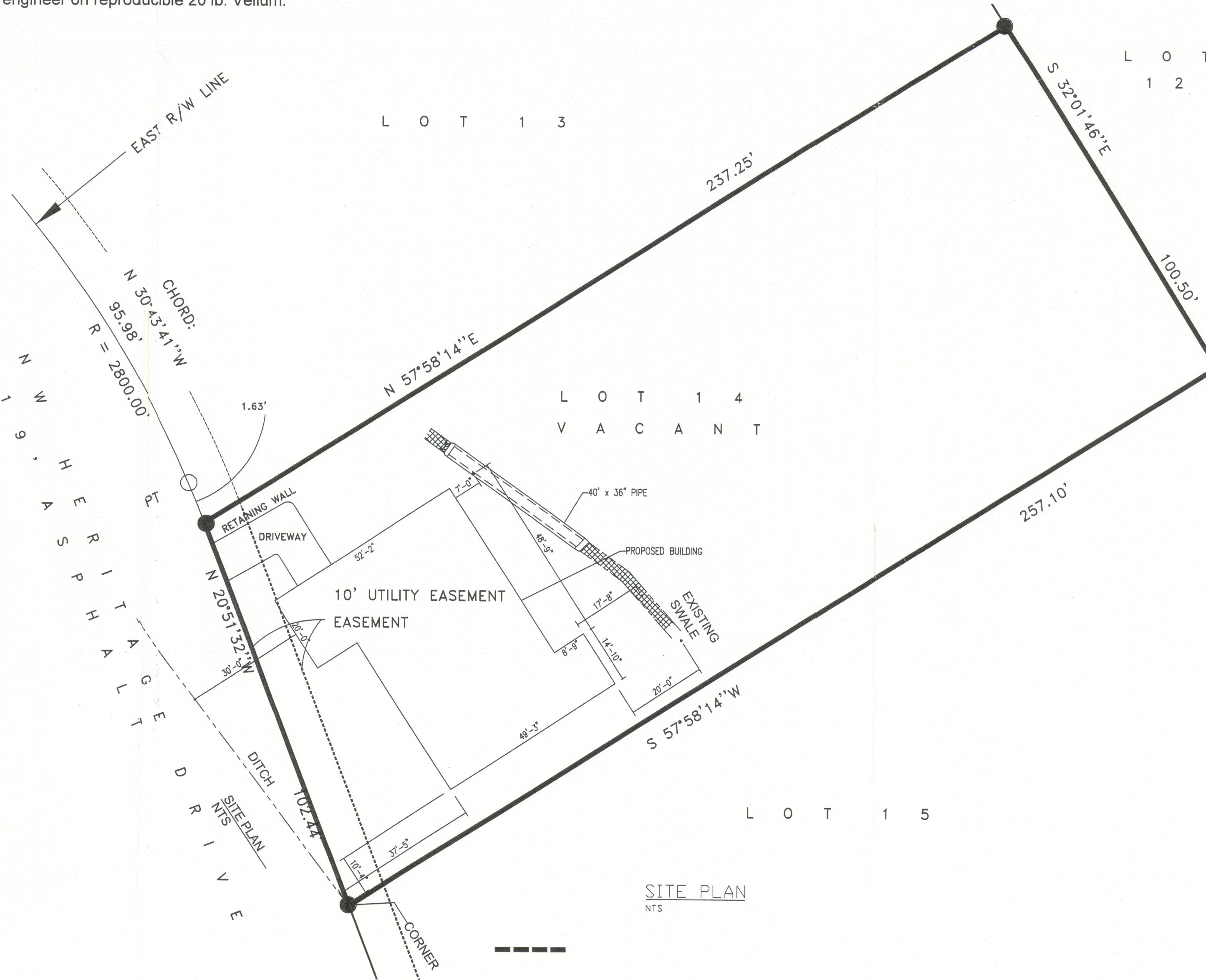
1/2" = 1'-0"

GENERAL NOTES

1. The contractor shall verify all existing conditions and dimensions at the job site to insure that all new work will fit in the manner intended on the plans. Should any conditions exist that are contrary to those shown on the plans, the contractor shall notify the engineer of such differences immediately prior to proceeding with the work.
2. The contractor shall maintain the construction site at all times in a secure manner. All open trenches and excavated areas shall be protected from access by the general public.
3. All construction materials to be according to the latest edition of the Florida Department of Transportation Standard Specifications for Road and Bridge Construction and the Florida Department of Transportation Design Standards.
4. Contractors shall adhere to the Erosion Control Plan. All erosion control measures shall be implemented prior to construction and be continued until construction is complete. Contractor shall take necessary measures to minimize erosion, turbidity, nutrient loading and sedimentation to adjacent lands and low areas. The Erosion and Sediment Control Plan shall be maintained as designed and upgraded as needed as directed by Engineer or SRWMD personnel. Construction designs and specifications as outlined by the "Florida Erosion and Sediment Control Inspectors Manual" shall be adhered to.
5. Boundary and topographical information shown was obtained from a survey performed by J. Sherman Frier and Associates, Inc., Florida Certificate No. 2245
6. Any public land corner within the limits of construction is to be protected. If a corner monument is in danger of being destroyed and has not been properly referenced, the contractor should notify the engineer.
7. All erosion control measures shall be implemented prior to construction.
8. Contractor shall coordinate all work with other contractors within project limits.
9. All disturbed areas not sodded shall be seeded with a mixture of long-term vegetation and quick-growing short-term vegetation for the following conditions. For the months from September through March, the mix shall consist of 70 pounds per acre of long-term seed and 20 pounds per acre of winter rye. For the months of April through August, the mix shall consist of 70 pounds per acre of long-term seed and 20 pounds per acre of millet.
10. The contractor shall waste all excess earth on site as directed by the engineer.
11. All site construction shall be in accordance with the Suwannee County Land Development Regulations.
12. The location of the utilities shown in the plans is approximate only. The exact location shall be determined by the contractor during construction.
13. Contractor shall review and become familiar with all required utility connections prior to bidding. Contractor shall provide all work and materials required to complete connection to the existing utilities. This includes, but is not limited to, manhole coring, wet taps, pavement repairs and directional boring.
14. Contractor shall provide an as-built survey meeting the requirements of Chapter 61G17 F.A.C. for the stormwater management systems. Include horizontal and vertical dimensional data so that improvements are located and delineated relative to the boundary. Provide sufficient detailed data to determine whether the improvements were constructed in accordance with the plans. Submit the survey to the engineer on reproducible 20 lb. Vellum.



RETAINING WALL  
1/2" = 1'-0"



SITE PLAN  
NTS

REV #	DATE	REVISION NOTES
1	04/06/06	REVISED RETAINING WALL

P.O. Box 187  
130 West Howard Street  
Live Oak FL 32064  
Phone: (386) 362-3678  
Fax: (386) 362-6133  
Auth: #9461  
STRUCTURAL CIVIL ENGINEERS  
Gary Gill, PE

GATEWAY DEVELOPMENT, LLC  
ARBOR GREENE  
LOT 14

CULVERT DETAILS,  
RETAINING WALL DETAILS, &  
GENERAL NOTES

PROJECT NUMBER PF05-034
DRAWN BY G.G.
CHECKED BY ---
1
SHEET ####