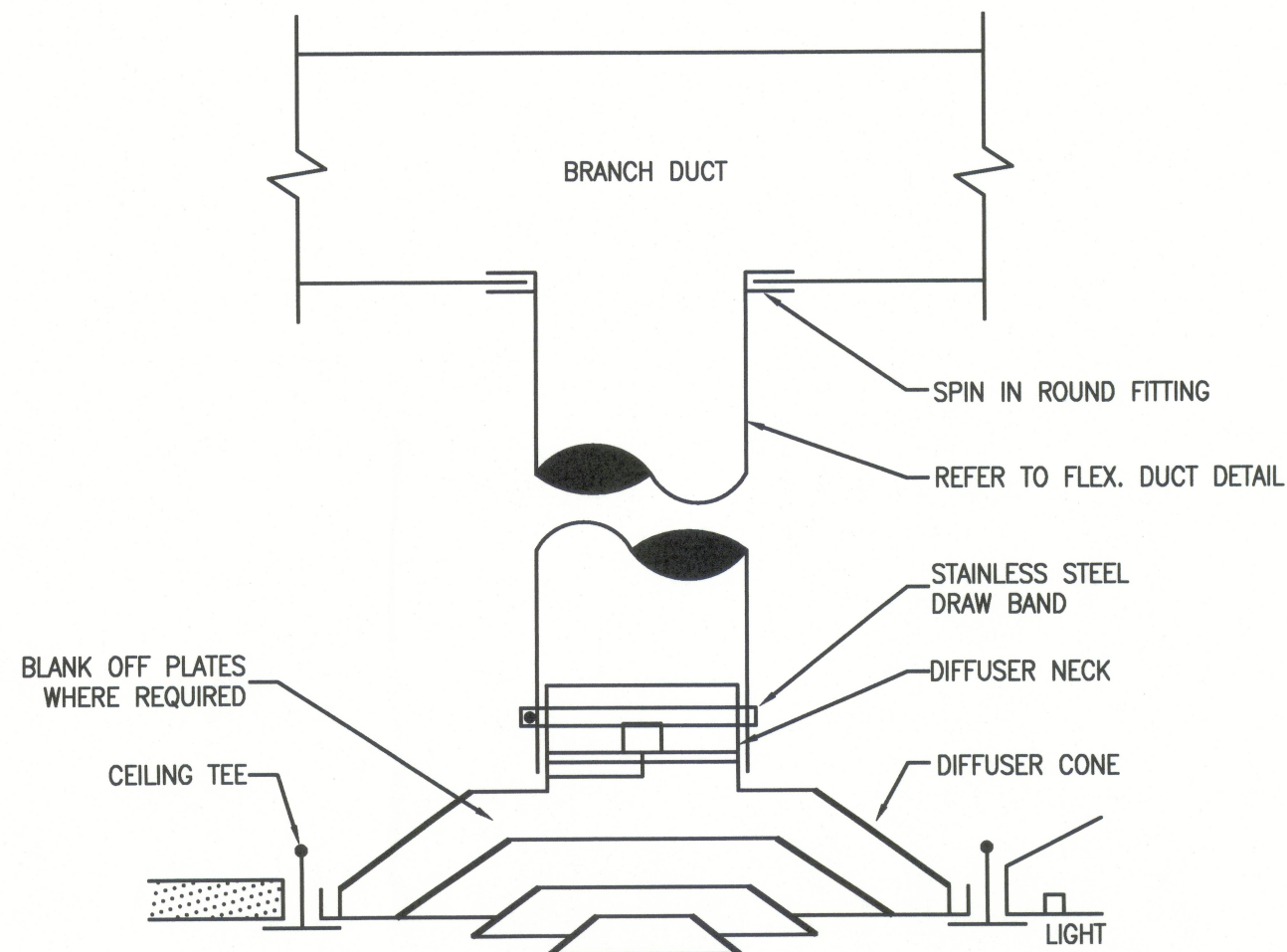
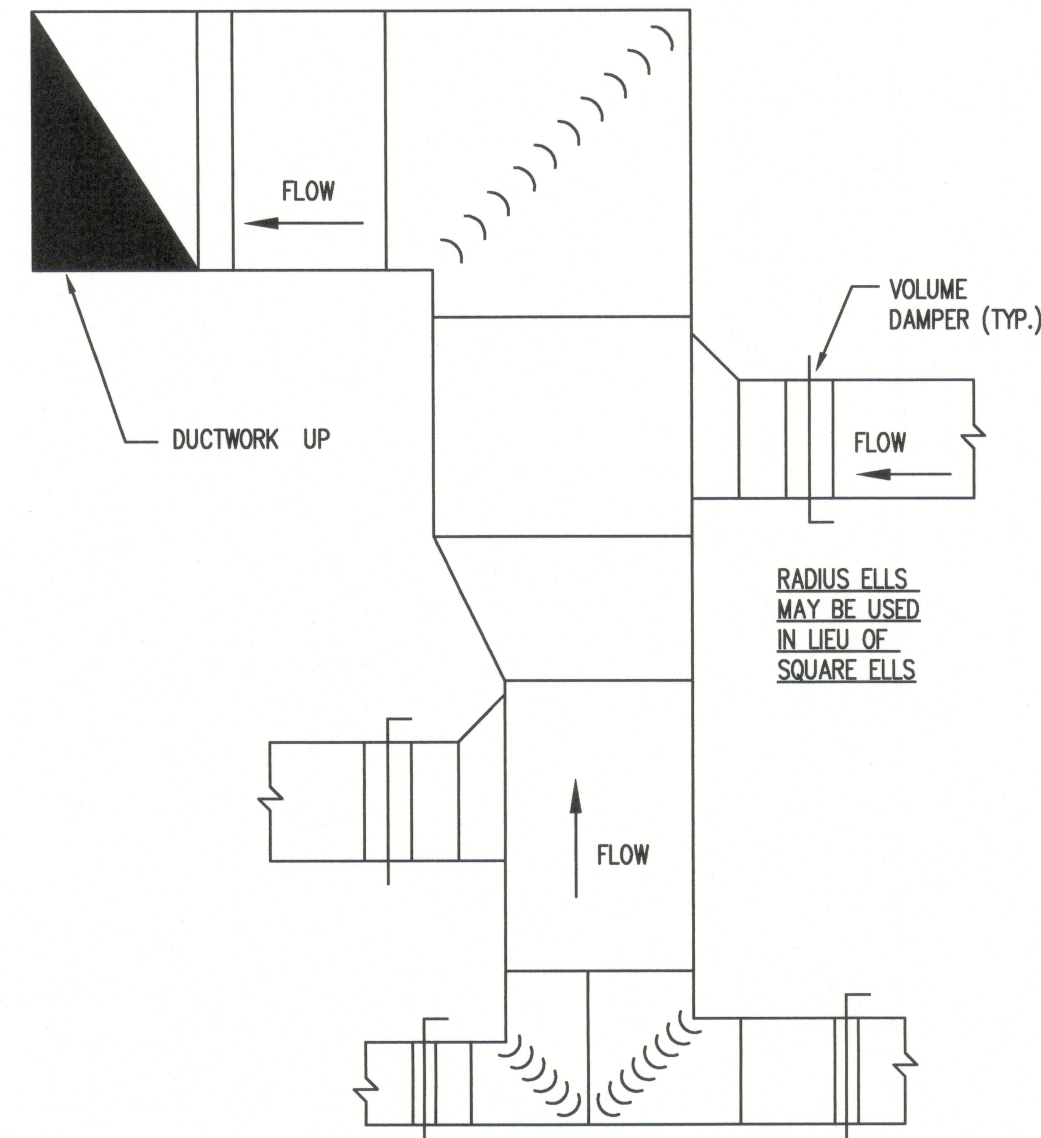


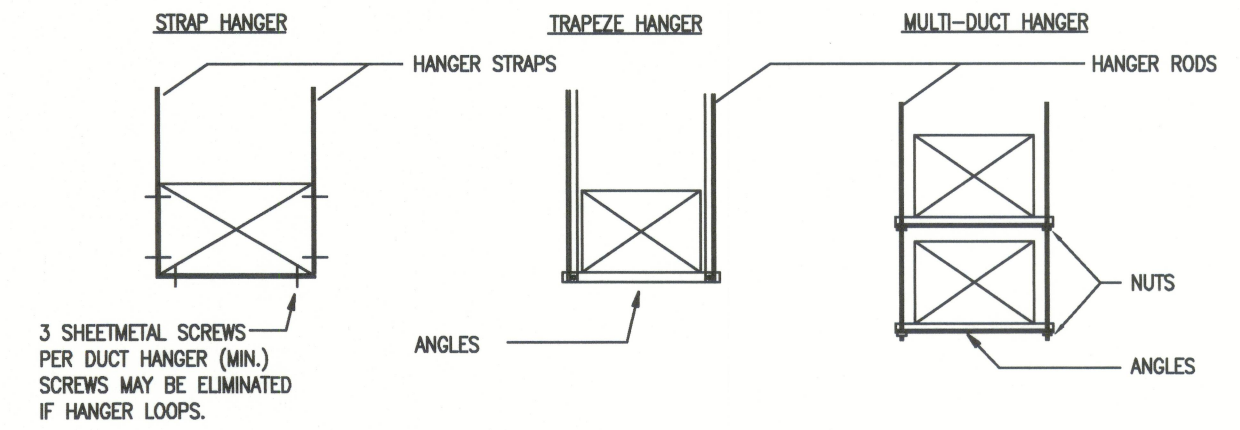
TYPICAL FLEXIBLE DUCT CONNECTION
NOT TO SCALE



DIFFUSER MOUNTING DETAIL
NOT TO SCALE



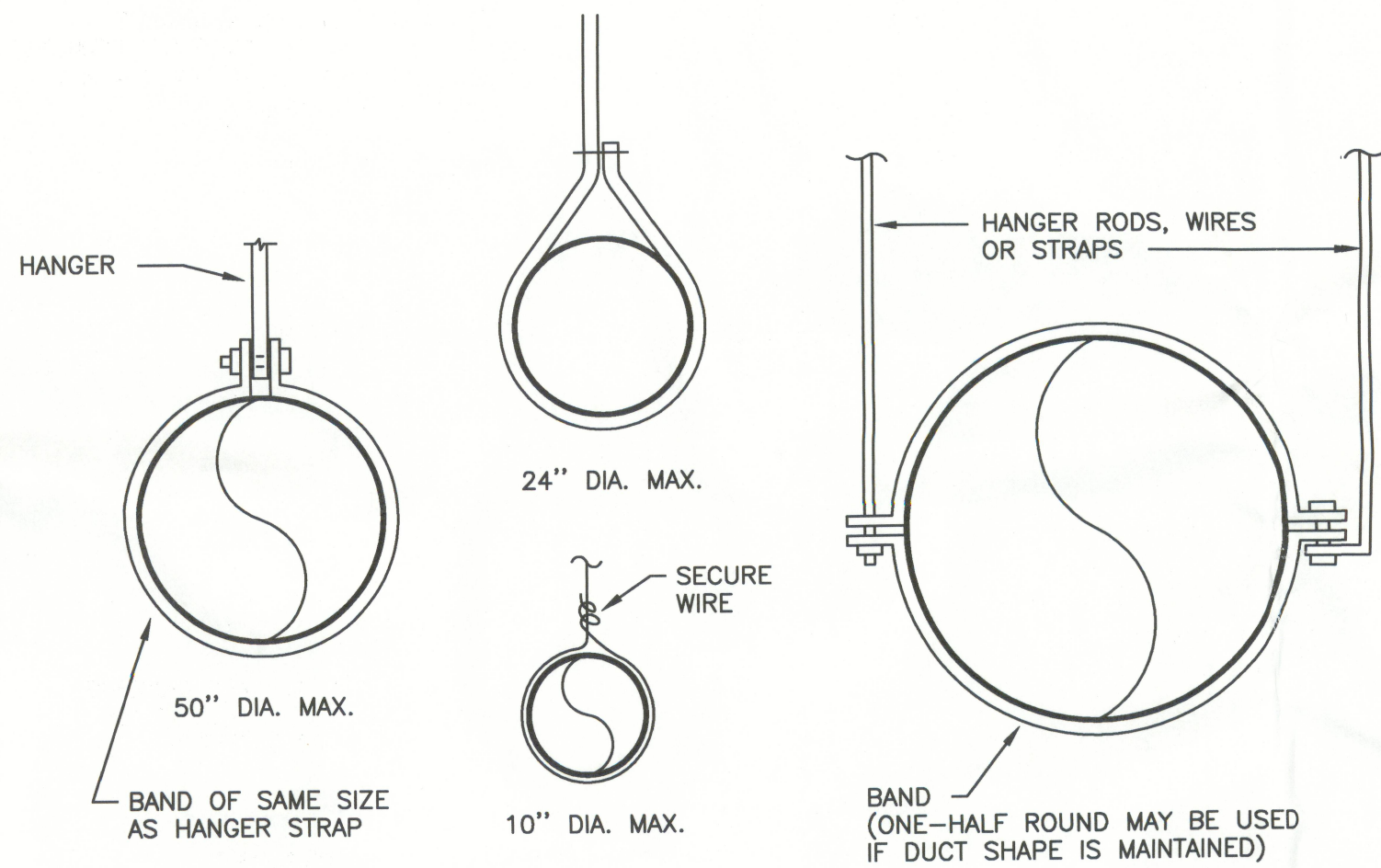
TYPICAL EXHAUST OR RETURN DUCT
NOT TO SCALE



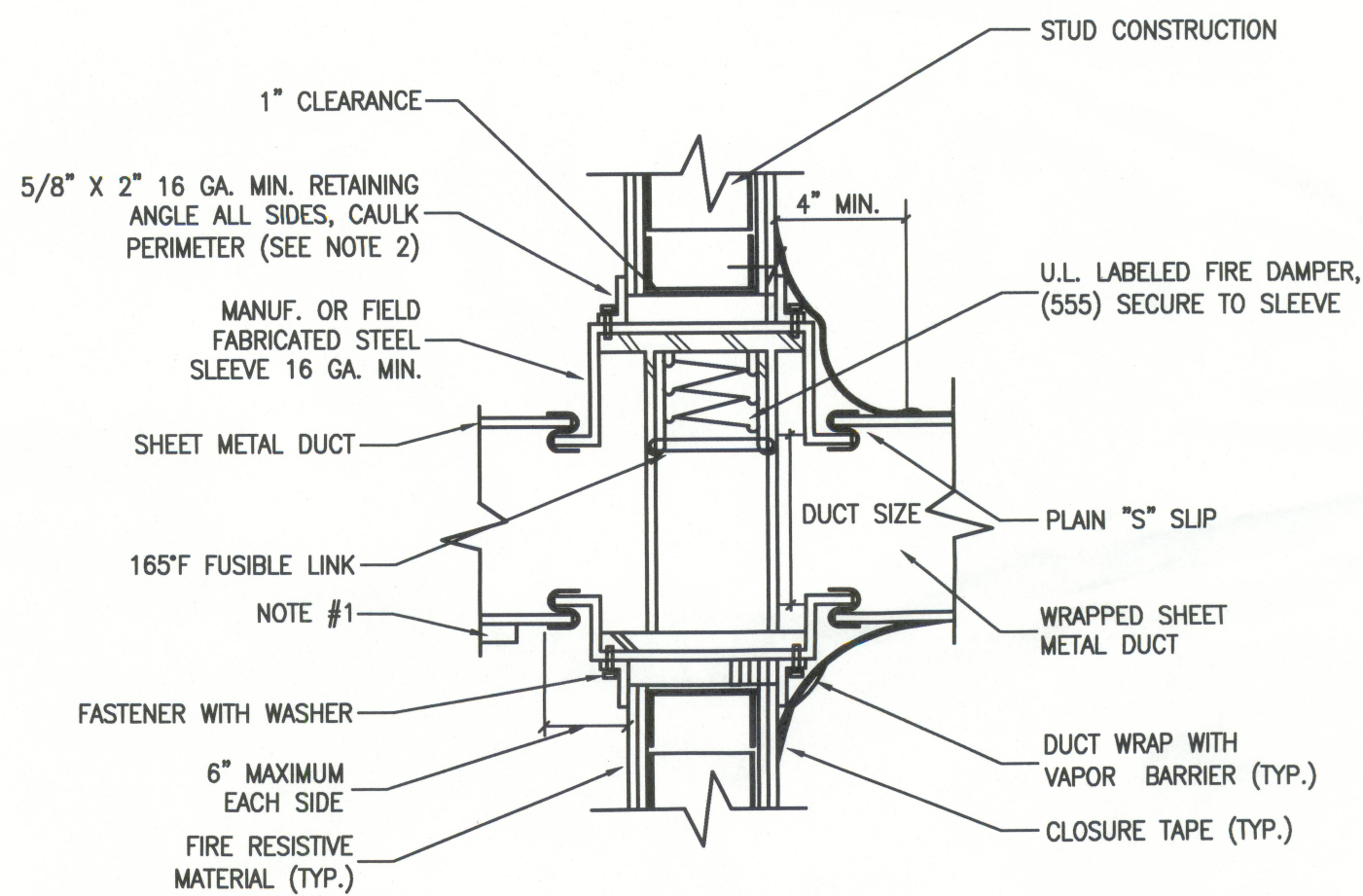
MINIMUM RECTANGULAR DUCT HANGER SIZES					
MAXIMUM DUCT WIDTH	MAXIMUM SPACING	WIRE SIZE	ROD SIZE	STRAP SIZE	TRAPEZE SIZE
24	10'-0"	10 GAUGE	----	1"x22 GAUGE	1x1x18 GAUGE
58	10'-0"	----	3/8"	1"x18 GAUGE	1x1x1/8
77	10'-0"	----	3/8"	1"x16 GAUGE	1.5x1.5x1/8

- NOTES:
- STRAPS ARE GALVANIZED STEEL; RODS ARE UNANODIZED OR GALVANIZED STEEL; WIRE IS BLACK ANNEALED, BRIGHT BASIC OR GALVANIZED STEEL. ALL ARE ALTERNATIVES.
 - TABLE ALLOWS FOR CONVENTIONAL WALL THICKNESS, AND JOINT SYSTEMS PLUS ONE LB/SF OF INSULATION WEIGHT. IF HEAVIER DUCTS ARE TO BE INSTALLED, ADJUST HANGER SIZES TO BE WITHIN THEIR LOAD LIMITS.
 - WHEN STRAP HANGERS ARE LAP JOINED USE THESE MINIMUM FASTENERS:
1"x 18, 20, 26 GAUGE 2-#10 OR OR 1-1/4" BOLT
1"x 16 GAUGE 2-1/4" BOLTS
1"x 14 GAUGE 2-3/8" BOLTS
 - REFER TO SMACNA HVAC CONSTRUCTION STANDARDS FOR ADDITIONAL INFORMATION.

DUCTWORK SUPPORT DETAILS
NOT TO SCALE

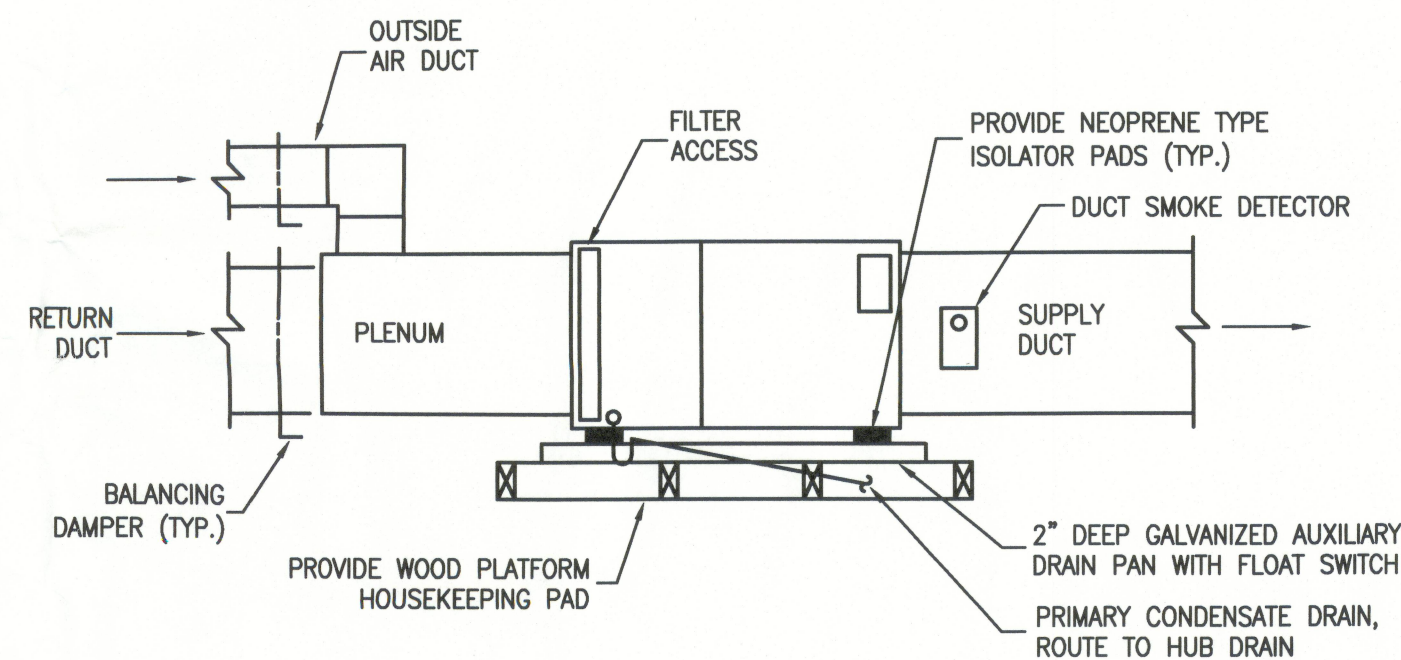


DUCTWORK SUPPORT DETAIL
NOT TO SCALE



FIRE DAMPER INSTALLATION DETAIL
NOT TO SCALE

- NOTES:
- PROVIDE ACCESS DOOR & LABEL ON SIDE OR BOTTOM OF DUCT AS FOLLOWS:
- | DUCT WIDTH | DOOR SIZE |
|--------------|-----------|
| 6" THRU 18" | 6" X 12" |
| 19" THRU 36" | 12" X 18" |
- RETAINING ANGLES SHALL LAP STRUCTURAL OPENING 1" MINIMUM AND COVER CORNERS OF OPENINGS. ANGLES MUST NOT BE ATTACHED TO EACH OTHER AT CORNERS OR TO WALL. ATTACH TO SLEEVE.



AIR HANDLING UNIT DETAIL
NOT TO SCALE

Ossi & Myler, Inc.
CONSULTING ENGINEERS

LAWRENCE OSSI, P.E.
FL LIC. #51463
ALONZO MYLER, P.E.
FL LIC. #65555

Handwritten signature/initials

Ossi & Myler, Inc.
All rights reserved.
No part of this work may be used, reproduced, distributed, displayed or otherwise communicated in any form or by any means without prior written consent of:
Ossi & Myler, Inc.

CORPORATE OFFICE FOR:
CADY & CADY STUDIOS
496 SW RING COURT
LAKE CITY, FLORIDA 32025

REV.	DATE	DESCRIPTION
0	8-4-11	PERMIT ISSUE
A	7-28-11	PRELIMINARY - NOT FOR CONSTRUCTION

DETAILS
MECHANICAL

PROJECT NO:
1113
DRAWN/DESIGNED BY:
AEM
CHECKED BY:
AEM
DRAWING SCALE:
AS NOTED
DRAWING NUMBER:
M-3