

COMPLIES WITH:
2020 FBC 7 ED.
ASCE 7-10

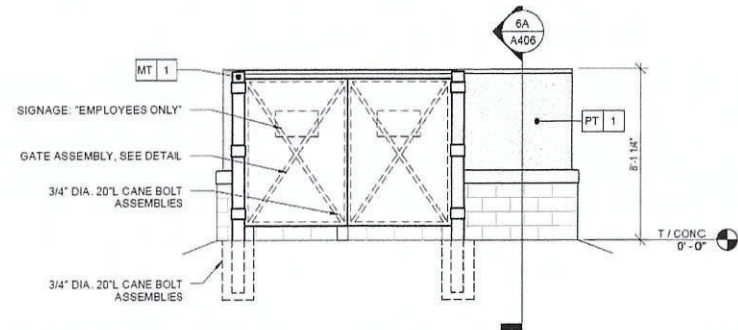
SIGN TYPE D: PAINTED PANELS W/ GRAPHICS
FOR DUMPSTER GATE
QTY: 1 **31 TOTAL SQ. FT.**



52" X 38" = 13.7 SQ. FT.

54" X 46" = 17.25 SQ. FT.

VERIFY DUMPSTER DOOR FRAME
DIMENSIONS WITH G.C. PRIOR
TO PRODUCTION



9D REVERSE TRASH - REAR
A406 1/4" = 1'-0"

William B. Zeeveld, PE
FL. Lic. #61169
P.O. Box 2241
Roswell, GA 30077-2241
(828) 692-7681

William B.
Zeeveld

Digitally signed by
William B. Zeeveld
Date: 2022.08.23
17:06:41 -04'00'



5198 NORTH LAKE DRIVE
LAKE CITY GA 30260
404-361-3800
FAX 404-361-7038
WWW.CLAYTONSIGNS.COM

DATE - 7.22.22
SIGN TYPE
EXTERIOR SIGN PACKAGE

CLIENT
TIDAL WAVE
3039 WEST US 90
LAKE CITY, FL 32055

REVISIONS:
REVISION # - DATE

DESIGNER RYAN M
ACCOUNT REP. TODD WILLIS

SCALE: AS INDICATED
DRAWING FILE NAME
01_RM_TIDAL WAVE \ LAKE CITY FL
TIDAL WAVE LAKE CITY FL SIGN PACKAGE -
7.22.22.CDR

DRAWING
STATUS:



THIS DRAWING IS AN ORIGINAL. ANY REPRODUCED
DESIGN CREATED BY CLAYTON SIGNS, INC. IT IS
NOT TO BE REPRODUCED, CHANGED, OR
EXHIBITED TO ANYONE OUTSIDE OF YOUR
COMPANY WITHOUT THE WRITTEN
WRITTEN PERMISSION FROM THE OWNER OF
CLAYTON SIGNS, INC. ANY REPRODUCTION MAY BE
SUBJECT TO LEGAL ACTION IN A COURT OF LAW.
©2019 ALL RIGHTS RESERVED

PAGE
7

SIGN TYPE D: PAINTED PANELS W/ GRAPHICS
FOR DUMPSTER GATE
QTY: 1

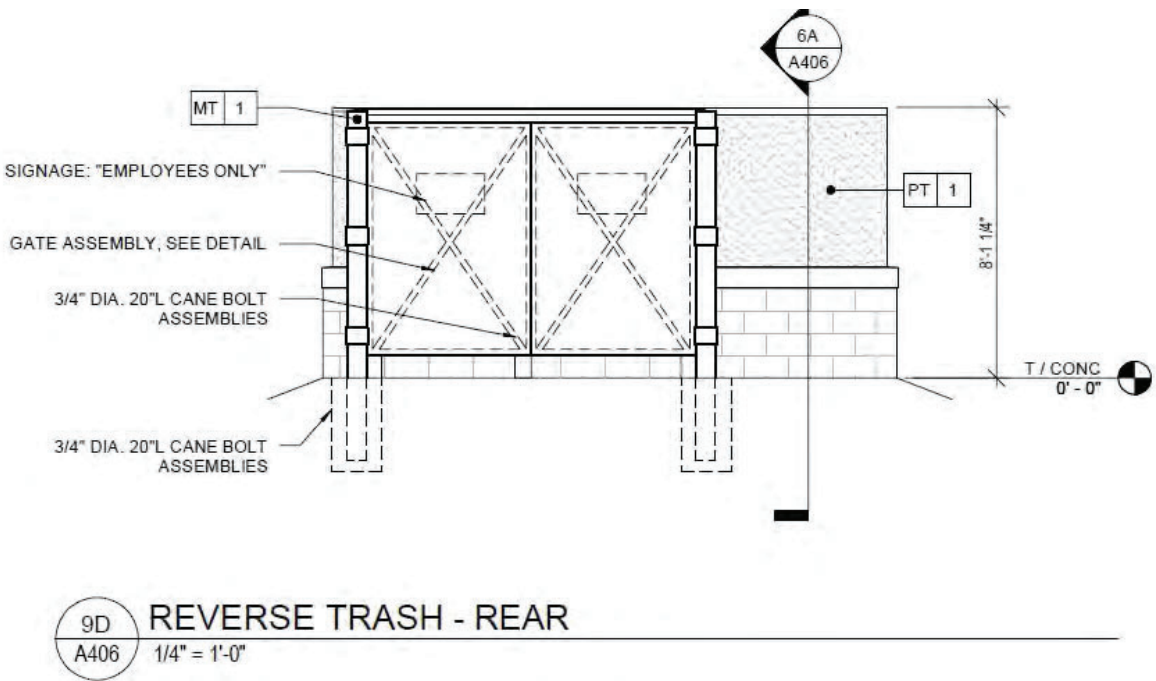
31 TOTAL SQ. FT.



52" X 38" = 13.7 SQ. FT.

54" X 46" = 17.25 SQ. FT.

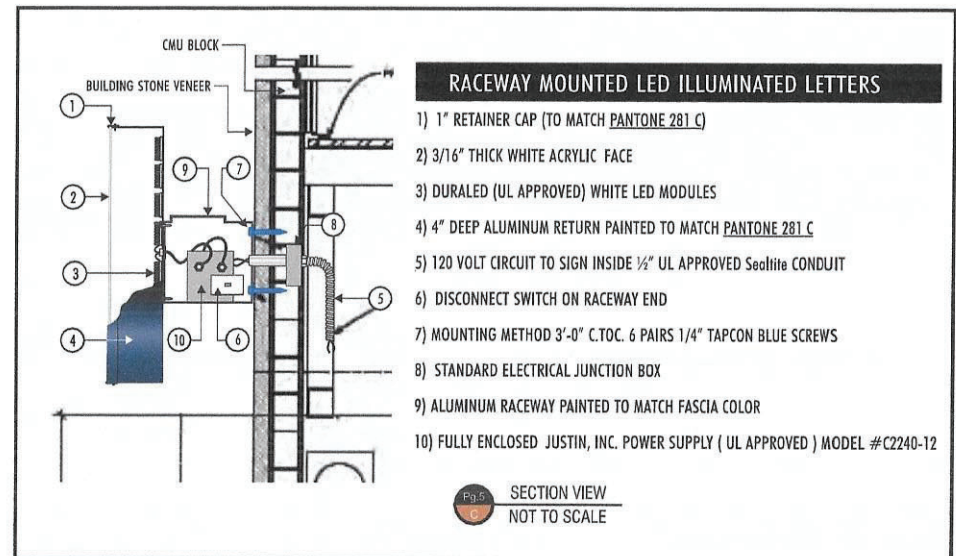
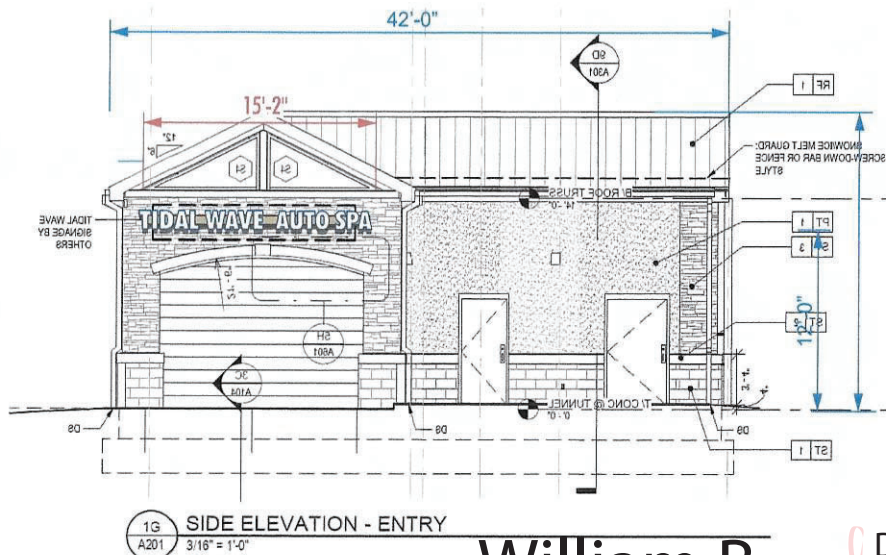
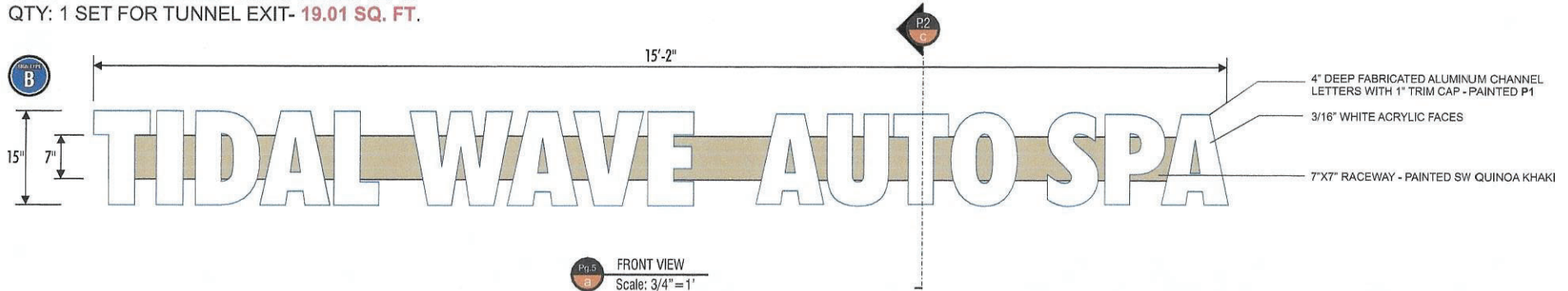
VERIFY DUMPSTER DOOR FRAME
DIMENSIONS WITH G.C. PRIOR
TO PRODUCTION



COMPLIES WITH: 2020 FBC 7 ED. ASCE 7-16

William B. Zeeveld, PE
FL. Lic. #61169
P.O. Box 2241
Roswell, GA 30077-2241
(828) 692-7681

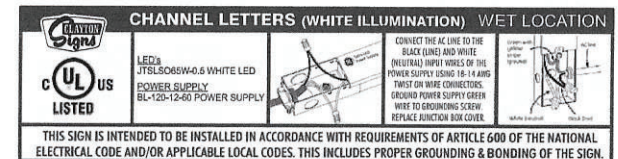
SIGN TYPE B: FACE-LIT CHANNEL LETTERS
QTY: 1 SET FOR TUNNEL EXIT- 19.01 SQ. FT.



P1 PAINT - MATCH PANTONE 281 C (GLOSS FINISH)
P2 PAINT - MATCH BUILDING FACADE (GLOSS FINISH)

William B.
Zeeveld

Digitally signed by
William B. Zeeveld
Date: 2022.08.23 16:58:54
-04'00'



CLAYTON Signs
Since 1965
5198 NORTH LAKE DRIVE
LAKE CITY, GA 30260
404-361-3800
FAX 404-361-7038
WWW.CLAYTONSIGNS.COM

DATE - 7.22.22
SIGN TYPE
EXTERIOR SIGN PACKAGE

CLIENT
TIDAL WAVE
3039 WEST US 90
LAKE CITY, FL 32055

REVISIONS:
REVISION # - DATE

DESIGNER RYAN M
ACCOUNT REP TODD WILLIS

SCALE: AS INDICATED
DRAWING FILE NAME
O:\RM\TIDAL WAVE\LAKE CITY FL
TIDAL WAVE LAKE CITY FL SIGN PACKAGE -
7.22.22.CDR

DRAWING
STATUS:

NF
NOT FINAL

THIS DRAWING IS AN ORIGINAL. ANY COPIES OR REPRODUCTIONS OF THIS DRAWING WITHOUT THE WRITTEN PERMISSION OF CLAYTON SIGNS, INC. ARE PROHIBITED. ANY SUCH ACTIONS MAY BE SUBJECT TO LEGAL ACTION BY CLAYTON SIGNS, INC.
©2019 ALL RIGHTS RESERVED

PAGE
5

ADDITIONAL SITE SIGNAGE
TIDAL WAVE AUTO SPA
3039 WEST US 90
LAKE CITY, FL 32055

2/3

FACE-LIT CHANNEL LETTERS SIGN

SIGN TYPE

CHANNEL LETTER WIND AREA, 75% OPEN = $(15 \frac{1}{2})(15.0)(.75) = 14.1 \text{ FT}^2$

LETTER SET + RACEWAY = 200# (EST.)

LETTERS AFFIXED TO RACEWAY AT FABRICATION SHOP OK

RACEWAY AFFIXED TO WALL USING 6 PAIRS $3 \frac{1}{8} \phi \times 2 \text{\" EMBED REDHEAD LDT ANCHORS (OR EQUAL)}$

HORIZ. WIND PRESSURE (COMPRESSION) = $14.1(45) = 635 \text{ #}$ SINCE SIGN AREA REPLACES

WALL AREA, THERE IS NO INCREASE OF WALL PRESSURE DUE TO WIND. OK

HORIZ. WIND PRESSURE (SUCTION) = $14.1(100) = 1410 \text{ #}$ TENSION ON $12 \text{ - } 3 \frac{1}{8} \phi \text{ LDTs (REQ'D)}$

ALLOW. TENSION ($12 \text{ - } 3 \frac{1}{8} \phi \times 2 \text{\" LDT}) = 12(373) = 4476 \text{ #} > 1410 \text{ #}$ REQ'D. OK

VERTICAL LOAD AT WALL = 200# = SHEAR ON $12 \text{ - } 3 \frac{1}{8} \phi \text{ LDTs (REQ'D)}$

ALLOW. SHEAR ($12 \text{ - } 3 \frac{1}{8} \phi \text{ LDT}) = 12(759) = 9108 \text{ #} > 200 \text{ #}$ REQ'D. OK

CAR WASH MENU

SIGN TYPE

STC-1, C-2

WIND PRESSURE = 45 #/FT²

SIGN: $36 \text{\" W} \times 84 \text{\" H} = 26.25 \text{ FT}^2$

WT. = 300# (EST.)

BEND. MT. AT TOP OF CONCRETE = $26.25(45)(6.0) = 7088 \text{ FT# (REQ'D.)}$

SIGN POLE: HSS SQ. STEEL $4 \times 4 \times \frac{1}{4} \text{\" WALL, A36, SEC. MOD.} = 3.90 \text{ in}^3$

ALLOW. BEND. MT. = $36000 \times \frac{3.90}{12} = 11700 \text{ FT#} > 7088 \text{ FT#}$ REQ'D. OK

BASE PLATE: $12 \times 12 \times \frac{3}{4} \text{\" A36, SEC. MOD.} = \frac{12(12)(\frac{3}{4})}{6} = 1.125 \text{ in}^3$

GUSSET PLATES (4): $4 \times 4 \times \frac{3}{8} \text{\" A36, SEC. MOD. (2) = } 2 \left[\frac{375(4)(\frac{3}{8})}{6} \right] = 2,000 \text{ in}^3 \left\{ 3.125 \text{ in}^3 \right.$

ALLOW. BEND. MT. = $36000 \times \frac{3.125}{12} = 9375 \text{ FT#} > 7088 \text{ FT#}$ REQ'D. OK

ANCHOR BOLTS: $4 \text{ - } 3 \frac{1}{2} \phi \times 6 \text{\" EMBED WEDGE ANCHORS @ } 8 \text{\" C-TAG, } 4000 \text{ #/in}^2 \text{ CONCRETE}$

TENSION = $7088 / \frac{1}{2} = 10632 \text{ #}$ ON 2 ANCHORS (REQ'D) $11812 / 2 = 5906 \text{ #/ANCHOR}$

ALLOW. TENSION/ANCHOR = $8705(.77) = 6702 \text{ #/ANCHOR} > 5906 \text{ #}$ REQ'D. OK

WIND PRESSURE = $26.25(45) = 1182 \text{ #} = \text{SHEAR ON } 4 \text{ - } 3 \frac{1}{2} \phi \text{ ANCHORS (REQ'D.)}$

ALLOW. SHEAR/ANCHOR = $23760(.61) = 14493 \text{ #/ANCHOR}$

TOTAL ALLOW. SHEAR ($4 \text{ - } 3 \frac{1}{2} \phi \text{ ANCHORS}) = 4(14493) = 57972 \text{ #} > 1182 \text{ #}$ REQ'D. OK

SIGN TYPE D DUMPSTER DOOR PANELS.

OK AS DRAWN

COMPLIES WITH:
2020 FBC 7 ED.
ASCE 7-16

William B. Zeeveld, PE
FL. Lic. #61169
P.O. Box 2241
Roswell, GA 30077-2241
(828) 692-7681

William

B.

Zeevel

d

Digitally
signed by
William B.
Zeeveld

Date:
2022.08.23

17:00:01 -04'00'