

STANDARD HEADER SCHEDULE

0'-0" UP TO 6'-0" OPENINGS

DOUBLE 2x8 No.12 SOUTHERN PINE WITH 1/2" OSB SOLID CONTINUOUS SPACER GLUED AND NAILED WITH 10d x 0.128" x 3" NAILS IN 2 ROWS @ 12" O.C. STAGGERED EACH SIDE WITH 1 - SIMPSON MSTA18 TOP AND 1 - SIMPSON SPH4R BOTTOM EACH SIDE OF OPENING WITH 1 - HEADER STUD AND 1 FULL HEIGHT STUD EACH SIDE OF OPENING

6'-0" UP TO 9'-0" OPENINGS

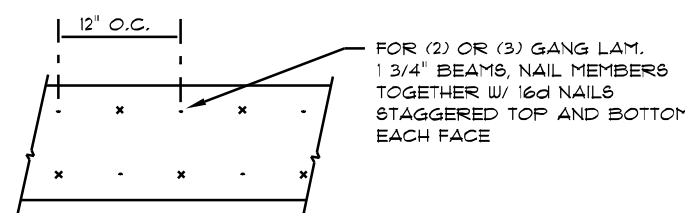
DOUBLE 2x12 No.12 SOUTHERN PINE WITH 1/2" OSB SOLID CONTINUOUS SPACER GLUED AND NAILED WITH 10d x 0.128" x 3" NAILS IN 2 ROWS @ 12" O.C. STAGGERED EACH SIDE WITH 1 - SIMPSON MSTA24 TOP AND 2 - SIMPSON SPH4R BOTTOM EACH SIDE OF OPENING WITH 1 - HEADER STUD AND 2 FULL HEIGHT STUDS EACH SIDE OF OPENING

9'-0" UP TO 16'-0" OPENINGS

DOUBLE 2x12 No.12 SOUTHERN PINE WITH 1/2" OSB SOLID CONTINUOUS SPACER GLUED AND NAILED WITH 10d x 0.128" x 3" NAILS IN 2 ROWS @ 12" O.C. STAGGERED EACH SIDE WITH 3 - SIMPSON MSTA18 EACH SIDE OF OPENING WITH 2 - HEADER STUDS AND 3 FULL HEIGHT STUDS EACH SIDE OF OPENING

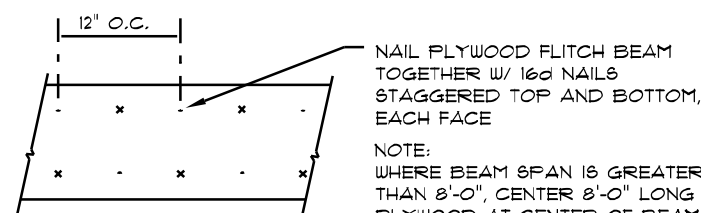
16'-0" GARAGE DOOR OPENINGS

2 PLY 1 1/4" x 11 7/8" 2.0E MICROLAMM LVL HEADER GLUED AND NAILED WITH 10d x 0.128" x 3" NAILS IN 2 ROWS @ 12" O.C. STAGGERED EACH SIDE WITH 3 - SIMPSON MSTA18 EACH SIDE OF OPENING WITH 2 - HEADER STUDS AND 3 FULL HEIGHT STUDS EACH SIDE OF OPENING



MULTIPLE GANG LAM. DETAIL

NOT TO SCALE



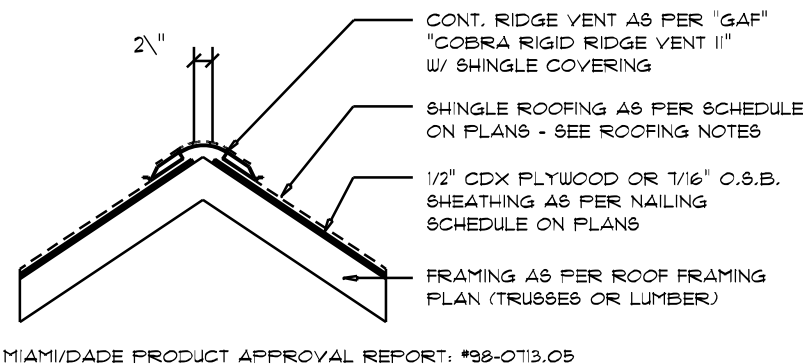
PLYWOOD FLITCH BEAM DETAIL

NOT TO SCALE

B/U Beam DETAILS

SCALE: NONE

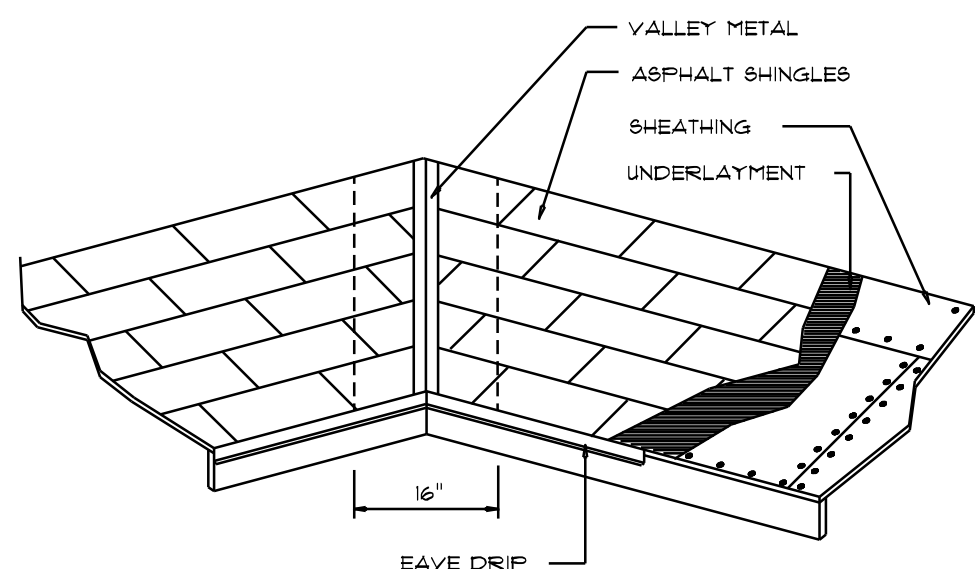
AREA OF ATTIC	REQ'D L.F. OF VENT	NET FREE AREA OF INTAKE
1600 SF	20 LF	410 SQ.IN.
1800 SF	24 LF	490 SQ.IN.
2000 SF	28 LF	570 SQ.IN.
2500 SF	32 LF	650 SQ.IN.
2800 SF	36 LF	730 SQ.IN.
3100 SF	40 LF	800 SQ.IN.
3600 SF	44 LF	900 SQ.IN.



Ridge Vent DETAIL

SCALE: 3/4" = 1'-0"

B



VALLEY FLASHING

ROOFING METALS for FLASHING/ROOFING

MINIMUM THICKNESS REQUIREMENTS

MATERIAL	MINIMUM THICKNESS (in)	GAGE	WEIGHT (LB.)
COPPER			16
ALUMINUM	0.024		
STAINLESS STEEL		28	
GALVANIZED STEEL	0.0175	26 (ZINC COATED G90)	
ZINC ALLOY LEAD PAINTED TERNE	0.021		40 20

Roofing/Flashing DETS.

SCALE: NONE

A

NOTE!
SHEATH ROOF W/ 1/2" CDX PLYWOOD PLACED W/ LONG DIMENSION PERPENDICULAR TO THE ROOF TRUSSES, SECURE TO FRAMING W/ 8d NAILS - AS PER DETAIL ON SHEET SD.4

NOTE!
THE DESIGN WIND SPEED FOR THIS PROJECT IS 130 MPH PER FBC 1609 AND LOCAL JURISDICTION REQUIREMENTS

NOTE!

WALLS SHALL BE SEALED WITH FIRE RETARDANT CAULKING.

TO LIMIT CAVITY HEIGHT TO 8'-0". PENETRATIONS THROUGH SUCH BLOCKING SHALL BE TREATED IN THE SAME MANNER AS TOP PLATES, NOTED ABOVE

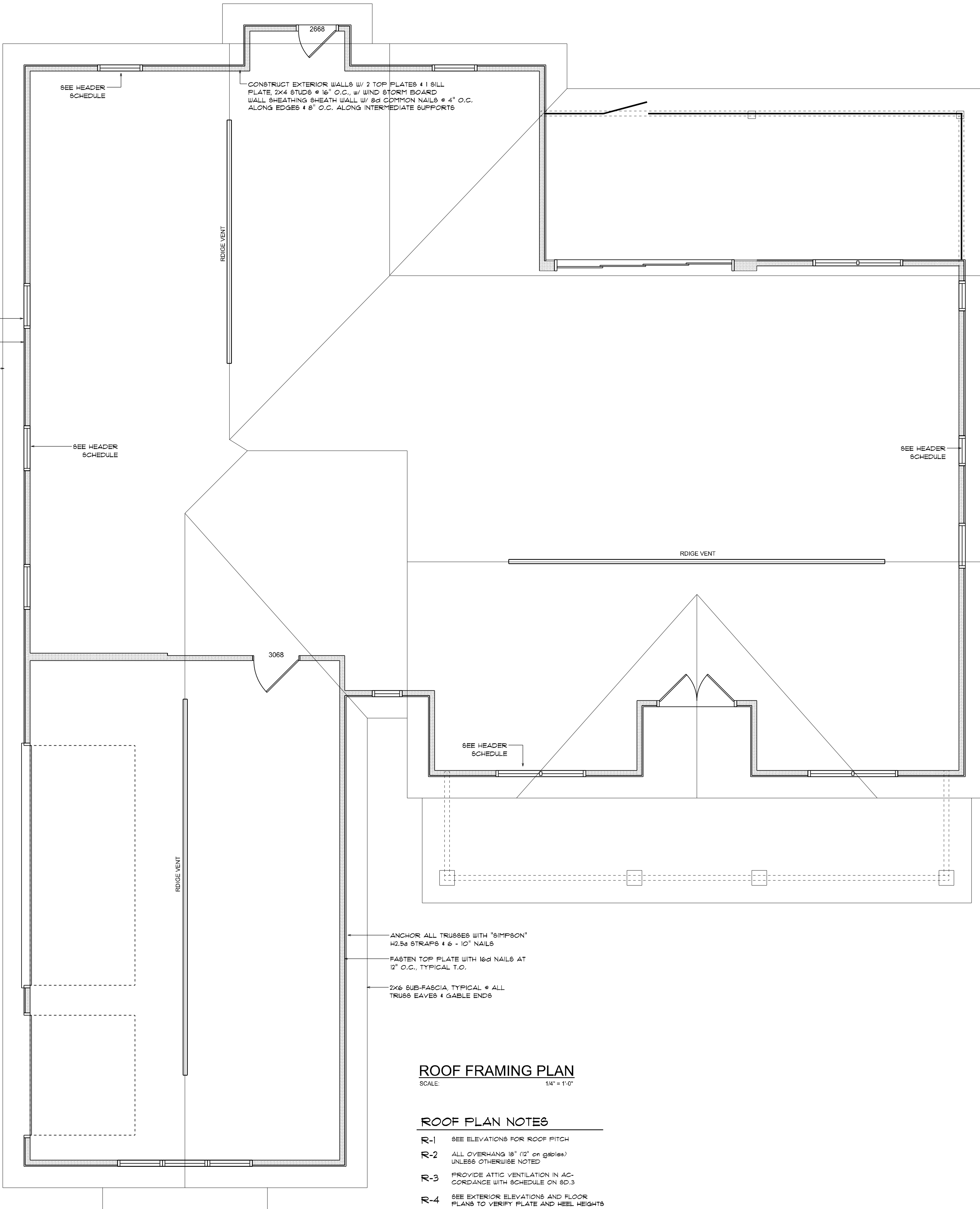
NOTE!

ANCHOR GIRDER TRUSS(ES) TO HEADER WITH 2 "SIMPSON" LST12 3 OR 4).
ANCHOR HEADERS TO KING STUDS W/ 2 "SIMPSON" ST22 EA. END - TYP., T.O.

ANCHOR ALL TRUSSES WITH "SIMPSON" H2.5d STRAPS @ 6" - 10" NAILS

FASTEN TOP PLATE WITH 16d NAILS AT 12" O.C., TYPICAL T.O.

2x6 SUB-FASCIA, TYPICAL @ ALL TRUSS EAVES & GABLE ENDS



ROOF FRAMING PLAN

SCALE: 1/4" = 1'-0"

ROOF PLAN NOTES

- R-1 SEE ELEVATIONS FOR ROOF PITCH
R-2 ALL OVERHANGS 18" (12" on gables) UNLESS OTHERWISE NOTED
R-3 PROVIDE ATTIC VENTILATION IN ACCORDANCE WITH SCHEDULE ON SD.3
R-4 SEE EXTERIOR ELEVATIONS AND FLOOR PLANS TO VERIFY PLATE AND HEEL HEIGHTS
R-5 MOVE ALL VENTS AND OTHER ROOF PENETRATIONS TO REAR

REVISIONS

JUNE 24th, 2019

MONTGOMERY RESIDENCE

IC CONSTRUCTION

818 W Duval St. Lake City, FL 32055

NICHOLAS PAUL GEISLER ARCHITECT
1155 NW Brown Rd.
Lake City, FL 32055

SHEET NUMBER

S.2

OF 4 SHEETS

AR0007005