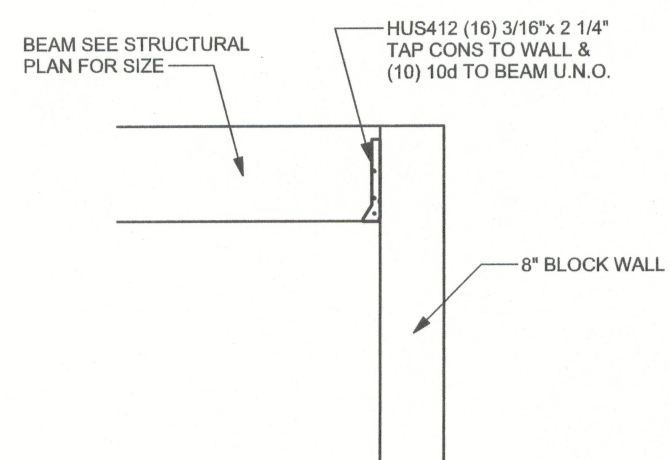
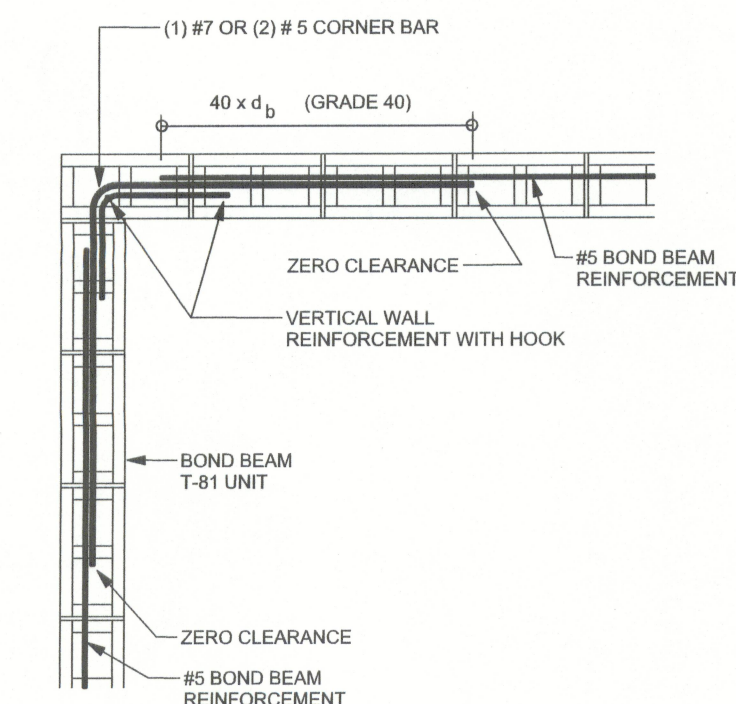


TYPICAL 1 STORY BLOCK WALL SECTION
SCALE: 1" = 1'-0"



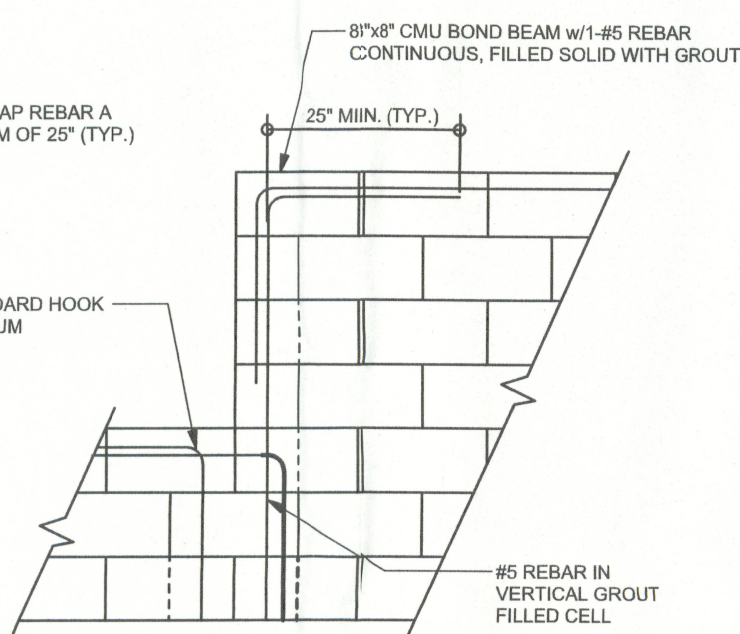
BEAM TO BLOCK CONNECTION DETAIL
SCALE: 1/2" = 1'-0"



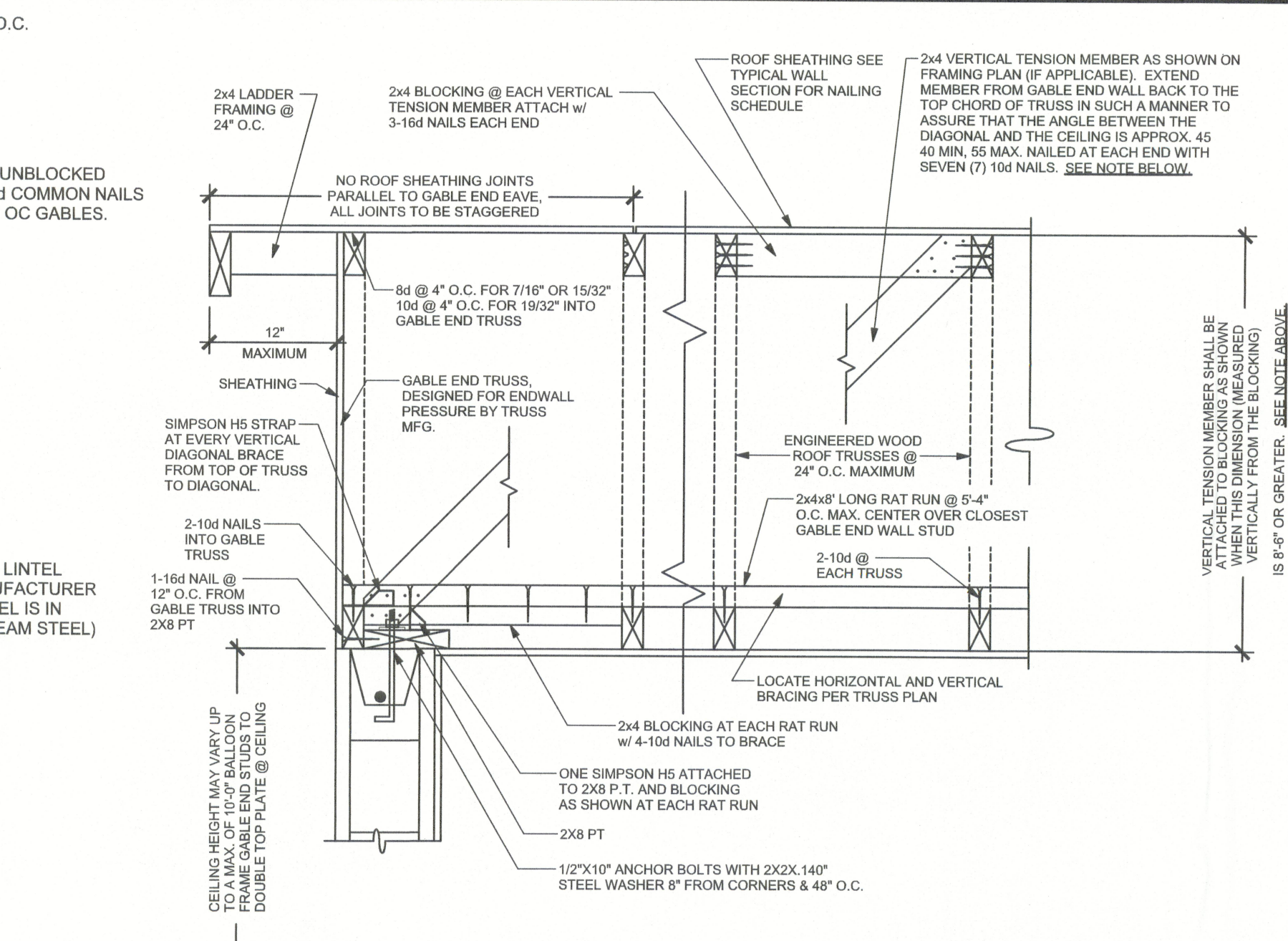
TYPICAL BOND BEAM CORNER DETAIL
SCALE: 1/2" = 1'-0"

NOTE: LAP REBAR A MINIMUM OF 25" (TYP.)

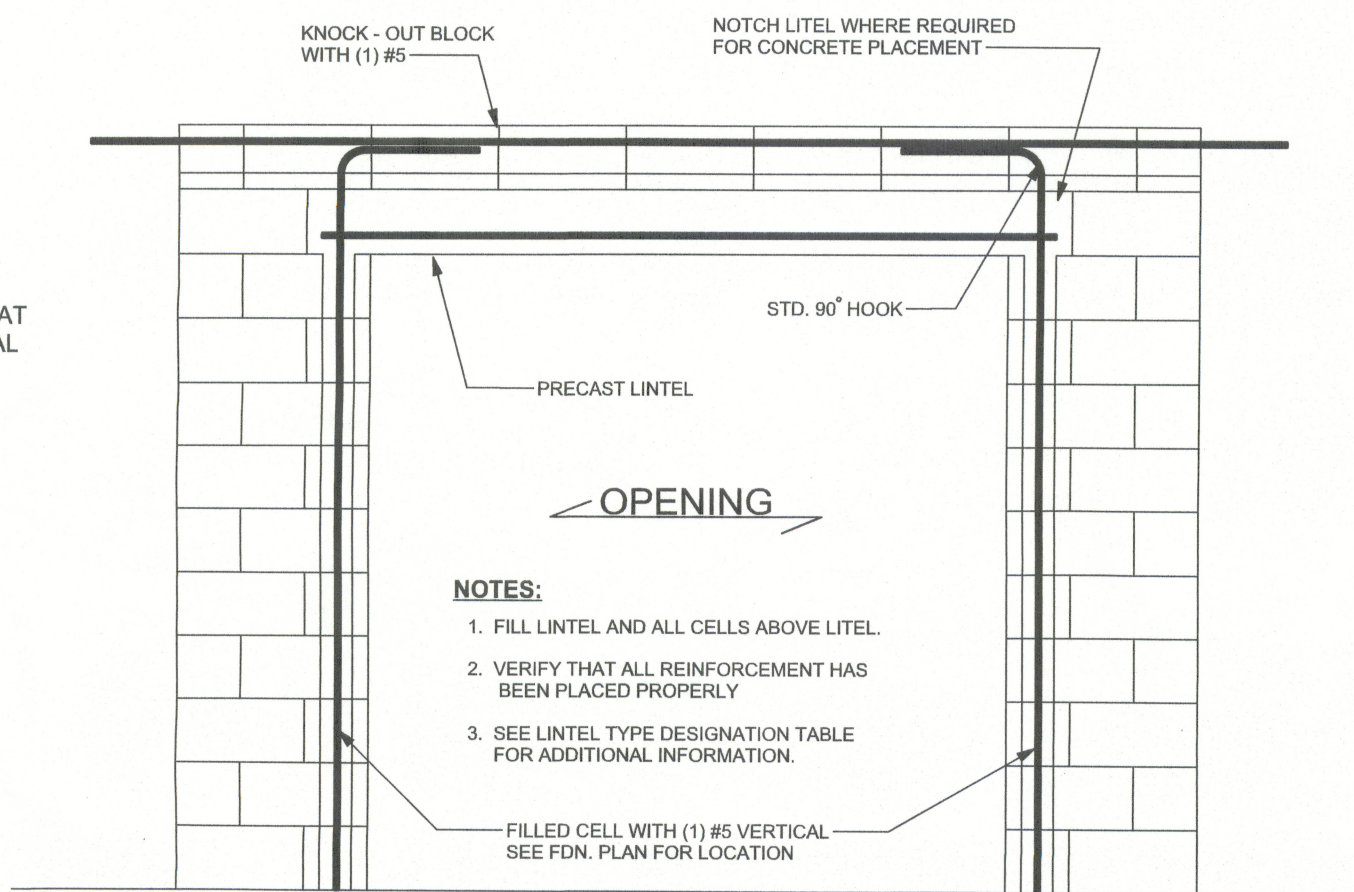
90° STANDARD HOOK 10" MINIMUM (TYPICAL)



RAISED BOND BEAM DETAIL
SCALE: 1/2" = 1'-0"



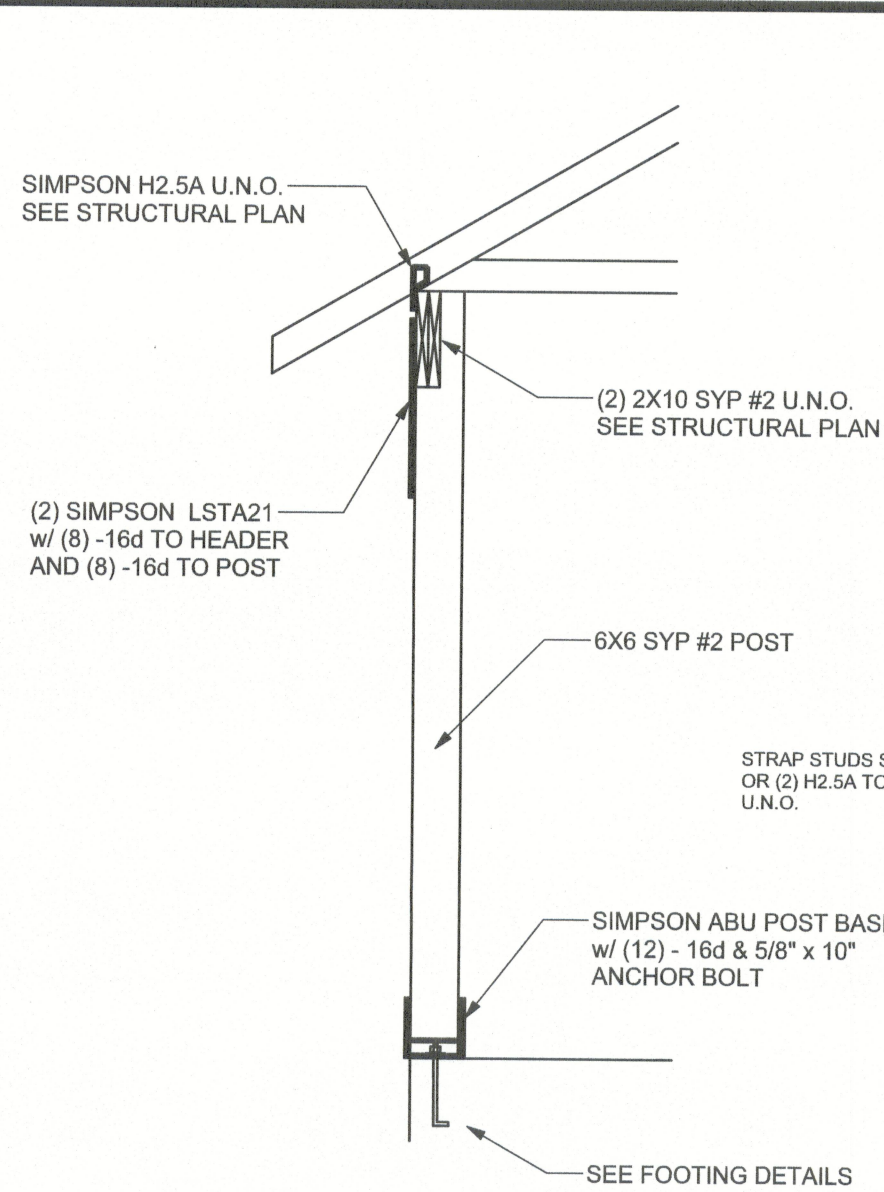
GABLE END DETAIL



TYPICAL FILLED LINTEL ASSEMBLY
SCALE: 1/2" = 1'-0"

GRADE & SPECIES TABLE

		Fb (psi)	E (10 ⁶ psi)
2x8	SYP #2	1200	1.6
2x10	SYP #2	1050	1.6
2x12	SYP #2	975	1.6
GLB	24F-V3 SP	2400	1.8
LSL	TIMBERSTRAND	1700	1.7
LVL	MICROLAM	2900	2.0
PSL	PARALAM	2900	2.0



TYPICAL PORCH POST DETAIL
SCALE: 1/2" = 1'-0"

MASONRY TRUSS ANCHOR TABLE

OBTAIN UPLIFT REQUIREMENTS FROM TRUSS MANUFACTURER'S ENGINEERING

UPLIFT LBS.	TRUSS CONNECTOR MASONRY *	
< 1205	TA22	10-10d x 1 1/2"
< 1605	TA22	11-10d
< 860	MTSM20	4 - 1/4"x2 1/4" TITEN IN BLOCK 7 - 10d IN TRUSS
< 1175	HTSM20	4 - 1/4"x2 1/4" TITEN IN BLOCK 10 - 10d IN TRUSS
< 1040	META20	7-10d, 1 1/2"
< 1490	META20	10-10d, 1 1/2"
< 1780	HETA20	7-16d
< 1780	LG2	7 - 1/4"x2 1/4" TITEN IN BLOCK 14 - 16d SINKER IN GIRDER
< 2130	HHETA20	17-10d, 1 1/2"
< 2310	HHETA24	21-10d, 1 1/2"
< 3965	MG	22-10d TO TRUSS 5/8" AB TO WALL 15" EMBEDMENT
< 10980	HGT-2	16-10d TO TRUSS (2) 3/4" AB TO WALL 15" EMBEDMENT
< 10530	HGT-3	16-10d TO TRUSS (2) 3/4" AB TO WALL 15" EMBEDMENT

ANCHOR TABLE

OBTAIN UPLIFT REQUIREMENTS FROM TRUSS MANUFACTURER'S ENGINEERING

UPLIFT LBS.	SYP	UPLIFT LBS. SPF	TRUSS CONNECTOR*	TO PLATES	TO RAFTER/TRUSS	TO STUDS
< 420	< 245		H5A	3-8d	3-8d	
< 455	< 265		H5	4-8d	4-8d	
< 360	< 235		H4	4-8d	4-8d	
< 455	< 320		H3	4-8d	4-8d	
< 415	< 365		H2.5	5-8d	5-8d	
< 600	< 535		H2.5A	5-8d	5-8d	
< 950	< 820		H6	8-8d	8-8d	
< 745	< 565		H8	5-10d, 1 1/2"	5-10d, 1 1/2"	
< 1465	< 1050		H14-1	13-8d	12-8d, 1 1/2"	
< 1465	< 1050		H14-2	15-8d	12-8d, 1 1/2"	
< 990	< 850		H10-1	8-8d, 1 1/2"	8-8d, 1 1/2"	
< 760	< 655		H10-2	6-10d	6-10d	
< 1470	< 1265		H16-1	10-10d, 1 1/2"	2-10d, 1 1/2"	
< 1470	< 1265		H16-2	10-10d, 1 1/2"	2-10d, 1 1/2"	
< 1000	< 860		MTS24C	7-10d 1 1/2"	7-10d 1 1/2"	
< 1450	< 1245		HTS24	12-10d 1 1/2"	12-10d 1 1/2"	
< 2800	< 2490		2 - HTS24			
< 2050	< 1785		LG2	14 - 16d	14 - 16d	
HEAVY GIRDER TIEDOWNS*				TO FOUNDATION		
< 3965	< 3330		MG	22 - 10d	1-5/8" THREADED ROD 12" EMBEDMENT	
< 10980	< 6485		HGT-2	16 - 10d	2-5/8" THREADED ROD 12" EMBEDMENT	
< 10530	< 9035		HGT-3	16 - 10d	2-5/8" THREADED ROD 12" EMBEDMENT	
< 9250	< 9250		HGT-4	16 - 10d	2-5/8" THREADED ROD 12" EMBEDMENT	
STUD STRAP CONNECTOR*				TO STUDS		
< 435	< 435		SSP DOUBLE TOP PLATE	3 - 10d	4 - 10d	
< 455	< 420		SSP SINGLE SILL PLATE	1 - 10d	4 - 10d	
< 825	< 825		DSP DOUBLE TOP PLATE	6 - 10d	8 - 10d	
< 825	< 600		DSP SINGLE SILL PLATE	2 - 10d	8 - 10d	
< 885	< 760		SP4		6-10d, 1 1/2"	
< 1240	< 1065		SP44		10-10d, 1 1/2"	
< 885	< 760		SP6		6-10d, 1 1/2"	
< 1240	< 1065		SPH6		10-10d, 1 1/2"	
< 1235	< 1165		LSTA18	14 - 10d		
< 1235	< 1235		LSTA21	16 - 10d		
< 1030	< 1030		CS20	16-8d		
< 1705	< 1705		CS16	28-8d		
STUD ANCHORS*				TO STUDS		
< 1350	< 1305		LTT19	8-16d	1/2" AB	
< 2310	< 2310		LTT131	18-10d, 1 1/2"	1/2" AB	
< 2775	< 2570		HD2A	2-5/8" BOLTS	5/8" AB	
< 4175	< 3695		HTT16	16 - 16d	5/8" AB	
< 1400	< 1400		PAHD42	16-16d		
< 3335	< 3335		HPAH022	16-16d		
< 2200	< 2200		ABU44	12-16d	1/2" AB	
< 2300	< 2300		ABU66	12-16d	1/2" AB	
< 2320	< 2320		ABU88	18 - 16d	2-5/8" AB	

MASONRY NOTES:

MASONRY CONSTRUCTION AND MATERIALS FOR THIS PROJECT SHALL CONFORM TO ALL REQUIREMENTS OF "SPECIFICATION FOR MASONRY STRUCTURES" (ACI 530.1/ASCE 6/TMS 602). THE CONTRACTOR AND MASON MUST IMMEDIATELY, BEFORE PROCEEDING, NOTIFY THE ENGINEER OF ANY CONFLICTS BETWEEN ACI 530.1-02 AND THESE DESIGN DRAWINGS. ANY EXCEPTIONS TO ACI 530.1-02 MUST BE APPROVED BY THE ENGINEER IN WRITING.

	Specific Requirements
1.4A Compressive strength	8" block bearing walls F'm = 1500 psi
2.1 Mortar	ASTM C 270, Type N, UNO
2.2 Grout	ASTM C 476, admixtures require approval
2.3 CMU standard	ASTM C 90-02, Normal weight, Hollow, medium surface finish, 8"x8"x16" running bond and 12"x12" or 16"x16" column block
2.3 Clay brick standard	ASTM C 216-02, Grade SW, Type FBS, 5.5"x2.75"x11.5"
2.4 Reinforcing bars, #3 - #11	ASTM 615, Grade 60, Fy = 60 ksi, Lap splices min 48 bar dia. (30" for #5)
2.4F Coating for corrosion protection	Anchors, sheet metal ties completely embedded in mortar or grout, ASTM A525, Class G60, 0.60 oz/lb or 304SS
2.4F Coating for corrosion protection	Joint reinforcement in walls exposed to moisture or wire ties, anchors, sheet metal ties not completely embedded in mortar or grout, ASTM A153, Class B2, 1.50 oz/lb or 304SS
3.3.E.2 Pipes, conduits, and accessories	Any not shown on the project drawings require engineering approval.
3.3.E.7 Movement joints	Contractor assumes responsibility for type and location of movement joints if not detailed on project drawings.

GENERAL NOTES:

TRUSSES: TRUSSES SHALL BE DESIGNED BY A FLORIDA LICENSED ENGINEER IN ACCORDANCE WITH THE FBC 2001. TRUSS ENGINEERING SHALL INCLUDE TRUSS DESIGN, PLACEMENT PLANS, TEMPORARY AND PERMANENT BRACING DETAILS. TRUSSES TO TRUSS CONNECTIONS, AND UPLIFT AND REACTION LOADS FOR ALL BEARING LOCATIONS. TRUSS ENGINEERING IS THE RESPONSIBILITY OF THE TRUSS MANUFACTURER AND SHALL BE SIGNED AND SEALED BY THE TRUSS MANUFACTURER'S DESIGN ENGINEER. IT IS THE BUILDER'S RESPONSIBILITY TO VERIFY THE TRUSS DESIGNER FULLY SATISFIED ALL THE ABOVE REQUIREMENTS AND TO SELECT UPLIFT CONNECTIONS BASED ON TRUSS ENGINEERING UPLIFT AND PROVIDE FOOTINGS FOR INTERIOR BEARING WALLS. BUILDER IS TO FURNISH TRUSS ENGINEERING TO WIND LOAD ENGINEER FOR REVIEW OF TRUSS REACTIONS ON THE BUILDING STRUCTURE. STRAP 2X6 RAFTERS WITH MIN UPLIFT CONNECTION 415LB EACH END, 2X8 RAFTERS 700 LB EACH END.

SITE PREPARATION: SITE ANALYSIS AND PREPARATION IS NOT PART OF THIS PLAN

FOUNDATION: CONFIRM THAT THE FOUNDATION DESIGN & SITE CONDITIONS MEET GRAVITY LOAD REQUIREMENTS (ASSUME 100 PSF BEARING CAPACITY UNLESS VISUAL OBSERVATION OR SOILS TEST PROVES OTHERWISE)

CONCRETE: MINIMUM COMPRESSIVE STRENGTH OF CONCRETE AT 28 DAYS, Fc = 3000 PSI.

WELDED WIRE REINFORCED SLAB: 6" x 6" W14 x W1.4, FB = 85KSI. WELDED WIRE REINFORCEMENT FABRIC (W.W.R.) CONFORMING TO ASTM A185, LOCATED IN MIDDLE OF THE SLAB, SUPPORTED WITH APPROVED MATERIALS OR SUPPORTS AT SPACINGS NOT TO EXCEED 3'.

FIBER CONCRETE SLAB: CONCRETE SLABS ON GROUND CONTAINING SYNTHETIC FIBER REINFORCEMENT. FIBER LENGTH 1/2 INCH TO 2 INCHES. DOSAGE AMOUNTS FROM 0.75 TO 1.5 POUNDS PER CUBIC YARD PER THE MANUFACTURER'S RECOMMENDATIONS. FIBERS TO COMPLY WITH ASTM C 1116. SUPPLIER TO PROVIDE ASTM C 1116 CERTIFICATION OF COMPLIANCE WHEN REQUESTED BY BUILDING OFFICIAL.

CONTROL JOINTS: WHERE SPECIFIED, SAWN CONTROL JOINTS IN SLAB-ON-GRADE SHALL BE CUT IN WIDTH RATIOS OF SLAB AREAS SHALL NOT EXCEED 1.5 AND TYPICAL SPACING OF CUTS TO BE 12FT. DO NOT CUT W/M OR REINFORCING STEEL. (RECOMMENDED LOCATION OF CONTROL JOINTS IS SUBJECT TO OWNER AND CONTRACTOR'S APPROVAL. THE CONTROL JOINTS ARE NOT INTENDED TO PREVENT CRACKS BUT RATHER TO ENCOURAGE THE SLAB TO CRACK ON A GIVEN LINE.)

REBAR: ASTM A 615, GRADE 60, DEFORMED BARS, Fy = 60 KSI. ALL LAP SPLICES 48" DB (30" FOR #5 BARS); UNO. ALL REINFORCEMENT SHALL BE DETAILED AND PLACED IN ACCORDANCE WITH ACI 315-96, U.N.O.

GLULAM BEAMS: GLULAM BEAM, GLB, 24F-V3SP, Fb = 2.4kl, E = 1800kl, UNO. SUPPLIER MAY SUPPLY AN ALTERNATE BEAM WITH EQUAL PROPERTIES OR MAY SUBMIT THEIR OWN SIZING CALCUS.

ROOF SHEATHING: ALL ROOFS ARE HORIZONTAL DIAPHRAGMS, 7/16" OSB SHEATHING, UNBLOCKED, APPLIED PERPENDICULAR TO FRAMING, OVER A MINIMUM OF 3 FRAMING MEMBERS, WITH PANEL EDGES STAGGERED, FASTENED WITH 8d COMMON NAILS (131), 6" OC PANEL EDGES, 12" OC INTERMEDIATE MEMBERS, GABLE ENDS AND DIAPHRAGM BOUNDARY, 4" OC, UNO.

STRUCTURAL CONNECTORS: MANUFACTURERS AND PRODUCT NUMBER FOR CONNECTORS, ANCHORS, AND REINFORCEMENT ARE LISTED FOR EXAMPLE NOT ENDORSEMENT, AN EQUIVALENT DEVICE OF THE SAME OR OTHER MANUFACTURER CAN BE SUBSTITUTED FOR ANY DEVICES LISTED IN THE EXAMPLE TABLES AS LONG AS IT MEETS THE REQUIRED LOAD CAPACITY. MANUFACTURER'S INSTALLATION INSTRUCTIONS MUST BE FOLLOWED TO ACHIEVE RATED LOADS.

ANCHOR BOLTS: A-307 ANCHOR BOLTS WITH MINIMUM EMBEDMENT AS SPECIFIED IN DRAWINGS BUT NO LESS THAN 7" IN CONCRETE OR REINFORCED BOND BEAM OR 15" IN GROUTED CMU.

WASHERS: WASHERS USED WITH 1/2" BOLTS TO BE 2" x 2" x 9/64"; WITH 5/8" BOLTS TO BE 3" x 3" x 9/64"; WITH 3/4" BOLTS TO BE 3" x 3" x 9/64"; WITH 7/8" BOLTS TO BE 3" x 3" x 5/16"; UNO.

NAILS: ALL NAILS ARE COMMON NAILS UNLESS OTHERWISE SPECIFIED OR ACCEPTED BY FBC TEST REPORTS AS HAVING EQUAL STRUCTURAL VALUES.

BUILDER'S RESPONSIBILITY

THE BUILDER AND OWNER ARE RESPONSIBLE FOR THE FOLLOWING, WHICH ARE SPECIFICALLY NOT PART OF THE WIND LOAD ENGINEER'S SCOPE OF WORK.

CONFIRM SITE CONDITIONS, FOUNDATION BEARING CAPACITY, GRADE AND BACKFILL HEIGHT, WIND SPEED AND DEBRIS ZONE, AND FLOOD ZONE.

PROVIDE MATERIALS AND CONSTRUCTION TECHNIQUES, WHICH COMPLY WITH FBC 2001 REQUIREMENTS FOR THE STATED WIND VELOCITY AND DESIGN PRESSURES.

PROVIDE A CONTINUOUS LOAD PATH FROM TRUSSES TO FOUNDATION. IF YOU BELIEVE THE PLAN OMMITS A CONTINUOUS LOAD PATH CONNECTION, CALL THE WIND LOAD ENGINEER IMMEDIATELY.

VERIFY THE TRUSS MANUFACTURER'S SEALED ENGINEERING INCLUDES TRUSS DESIGN, PLACEMENT PLANS, TEMPORARY AND PERMANENT BRACING DETAILS, TRUSS-TO-TRUSS CONNECTIONS, AND UPLIFT AND REACTION LOADS FOR ALL BEARING LOCATIONS.

ROOF SYSTEM DESIGN

THE SEAL ON THESE PLANS FOR COMPLIANCE WITH FBC 2001, SECTION 1606 IS BASED ON REACTIONS, UPLIFTS, AND BEARING LOCATIONS IN TRUSS ENGINEERING SUBMITTED TO THE WIND LOAD ENGINEER. IT IS THE RESPONSIBILITY OF THE BUILDER TO CHECK ALL DETAILS OF THE COMPLETE ROOF SYSTEM DESIGN SUBMITTED BY THE TRUSS MANUFACTURER AND HAVE IT SIGNED, AND SEALED BY A DESIGN PROFESSIONAL FOR CORRECT APPLICATION OF FBC 2001 REQUIRED LOADS AND ANY SPECIAL LOADS. THE BUILDER IS RESPONSIBLE TO REVIEW EACH INDIVIDUAL TRUSS MEMBER AND THE TRUSS ROOF SYSTEM AS A WHOLE AND TO PROVIDE RESTRAINT FOR ANY LATERAL BRACING. THE BUILDER SHOULD USE CARE CHECKING THE ROOF DESIGN BECAUSE THE WIND LOAD ENGINEER IS SPECIFICALLY NOT RESPONSIBLE FOR THE TRUSS LAYOUT WHICH WAS CREATED BY THE TRUSS MANUFACTURER AND THE TRUSS DESIGNER ALSO DENIES RESPONSIBILITY FOR THE LAYOUT PER NOTES ON THEIR SEALED TRUSS SHEETS.

DESIGN DATA

WIND LOADS PER FLORIDA BUILDING CODE 2001, SECTION 1606.2

(ENCLOSED SIMPLE DIAPHRAGM BUILDINGS WITH FLAT, HIPPED, OR GABLE ROOFS; MEAN ROOF HEIGHT NOT EXCEEDING LEAST HORIZONTAL DIMENSION OR 60 FT; NOT ON UPPER HALF OF HILL OR ESCARPMENT 60 FT IN EXP. B, 30 FT IN EXP. C AND >10% SLOPE AND UNOBSTRUCTED UPWIND FOR 50x HEIGHT OR 1 MILE WHICHEVER IS LESS.)

BUILDING IS NOT IN THE HIGH VELOCITY HURRICANE ZONE

BUILDING IS NOT IN THE HIGH BORNE DEBRIS REGION

1. BASIC WIND SPEED = 110 MPH

2. WIND EXPOSURE = B

3. WIND IMPORTANCE FACTOR = 1.0

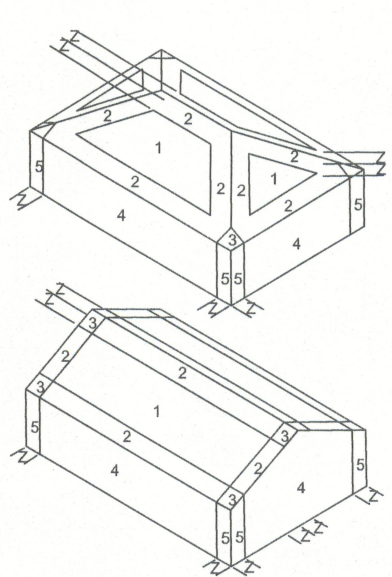
4. BUILDING CATEGORY = II

5. ROOF ANGLE = 10-45 DEGREES

6. MEAN ROOF HEIGHT = <30 FT

7. INTERNAL PRESSURE COEFFICIENT = N/A (ENCLOSED BUILDING, 1606.2)

8. COMPONENTS AND CLADDING DESIGN WIND PRESSURES (FBC TABLE 1606.2 B&C)



Zone	Effective Wind Area (ft2)	
10	100	
1	19.9 -21.8	18.1 -18.1
2	19.9 -25.5	18.1 -21.8
2 Ovg	40.6	40.6
3	19.9 -25.5	18.1 -21.8
3 Ovg	68.3	42.4
4	21.8 -23.6	18.5 -20.4
5	21.8 -29.1	18.5 -22.6
Doors & Windows Worst Case (Zone 5, 10 ft2)	21.8	-28.1
8x7 Garage Door	19.5	-22.9
16x7 Garage Door	18.5	-21.0

DESIGN LOADS

FLOOR 40 PSF (ALL OTHER DWELLING ROOMS)
30 PSF (SLEEPING ROOMS)
30 PSF (ATTICS WITH STORAGE)
10 PSF (ATTICS WITHOUT STORAGE, <3.12)
ROOF 20 PSF (FLAT OR <4.12)
16 PSF (4.12 TO <12.12)
12 PSF (12.12 AND GREATER)
STAIRS 40 PSF (ONE & TWO FAMILY DWELLINGS)
SOIL BEARING CAPACITY 1000PSF
NOT IN FLOOD ZONE (BUILDER TO VERIFY)

REVISIONS

NO.	DESCRIPTION	DATE
1		
2		
3		
4		
5		

SOFTPLAN
ARCHITECTURAL DESIGN SOFTWARE

WINDLOAD ENGINEER: Mark Disosway,
PE No.53915, POB 868, Lake City, FL
32056, 386-754-5419

DIMENSIONS:
Stated dimensions supercede scaled dimensions. Refer all alterations to Mark Disosway, P.E. for resolution. Do not proceed without clarification.

COPYRIGHTS AND PROPERTY RIGHTS:
Mark Disosway, P.E. hereby expressly reserves its common law copyrights and property right in these instruments of service. This document is not to be reproduced, altered or copied in any form or manner without first the express written permission and consent of Mark Disosway.

CERTIFICATION: I hereby certify that I have examined this plan, and that the applicable portions of the plan, relating to wind engineering comply with section 1606, Florida building code 2001, to the best of my knowledge.