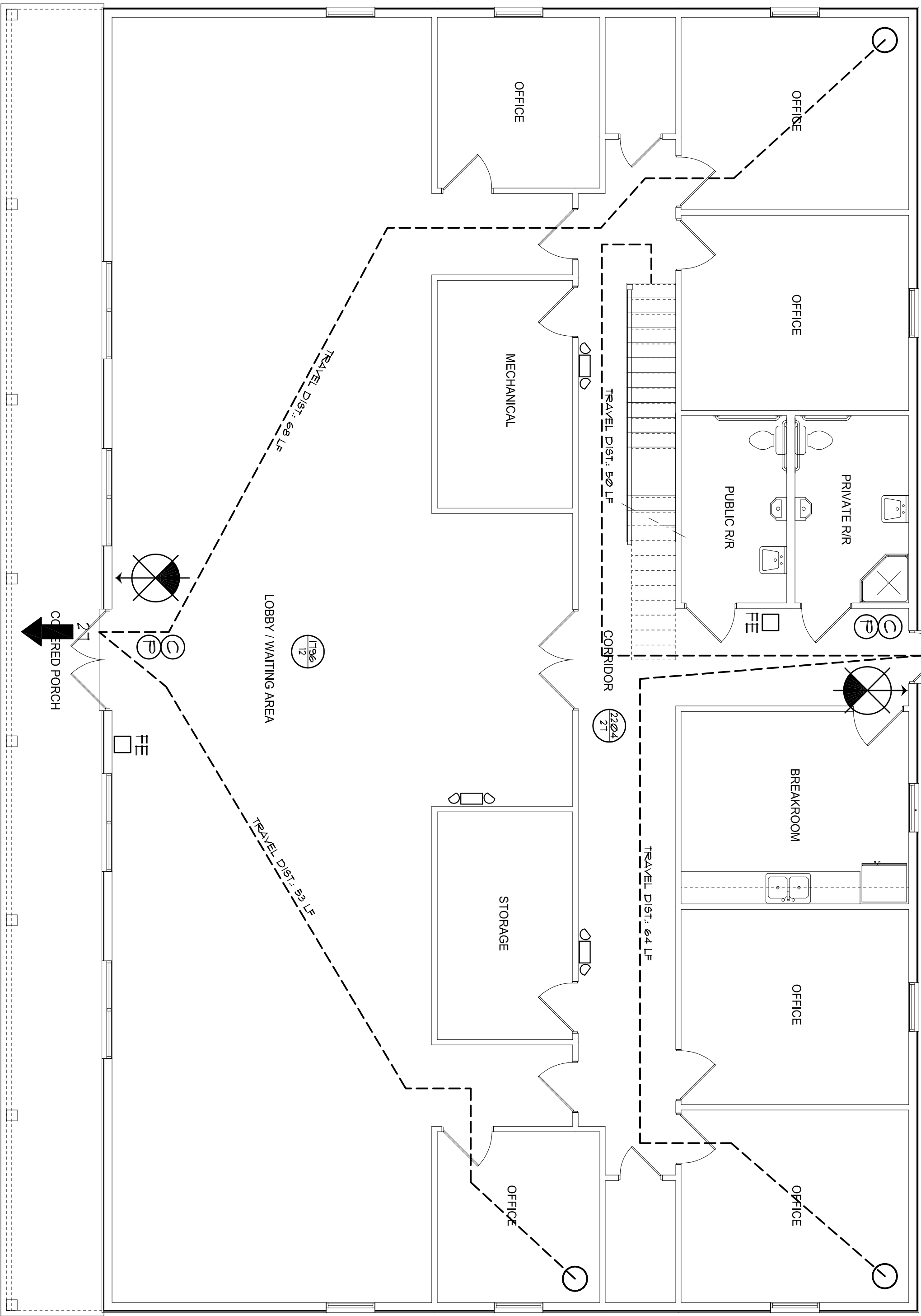


LOFT LIFE SAFETY PLAN

SCALE: 3/16" = 1'-0"



LIFE SAFETY PLAN

SCALE: 3/16" = 1'-0"



8" SQ. HALTSE CROSS W/ "F.R." IDENTIFIER  
SIGNAGE MOUNTED @ 60" ABV WALL/CEILING  
LOCATE AS DIRECTED BY THE FIRE MARSHALL

NOTE!  
EMERGENCY LIGHTING AND EXIT SIGNS SHALL BE PROVIDED  
AS DIRECTED BY THE FIRE MARSHALL AND SHALL BE WIRE  
PER NEC 100-4F.

NOTE!  
SMOKE DETECTORS SHALL BE MOUNTED NOT LESS  
THAN 50" ABOVE FINISHED FLOOR AND SHALL BE THE  
IONIZATION TYPE. INTERLOCKED TOGETHER POWERED  
FROM EACH STORE PANEL W/ BATTERY BACKUP

LEGEND

- EXIT LIGHT - ARROW  
REPRESENTS DIRECTION  
OF EXIT
- WALL HUNG "ABC" FIRE  
EXTINGUISHER
- DOOR CLOSER FOR EXITING  
OR RATING REASON
- PANIC DEVICE
- ROOM SQUARE FOOTAGE  
ROOM OCCUPANCY LOAD
- PRIMARY EGRESS  
W/EXIT CAPACITY
- SECONDARY EGRESS
- EMERGENCY LIGHTING - DUAL  
HEAD W/ BATT PACK

2017 FBC-BUILDING TABLE 1004.1.1

MAXIMUM FLOOR AREA ALLOWABLE PER OCCUPANT

OCCUPANCY CLASSIFICATION	FLOOR AREA	OCCUPANCY	NUMBER OF OCCUPANTS
OFFICE	8714	11/20 SF	9
BUSINESS AREA:	1763	1/150 SF	12
RESEARCH AREA	1537	1/150 SF	4
RESEARCH AREA	1537	1/150 SF	4
CORRIDOR	4514	5/1200 SF	2
STORAGE	1787	1/1200 SF	5
EQUIPMENT	1167	1/1200 SF	1
LOFT ATTIC STORAGE	18316	1/1500 SF	1
BUILDING	2528	1/1500 SF	4
BUILDING TOTALS:	58916		39

EXIT ACCESS TRAVEL DISTANCE PER FBC 105, TABLE 105.1

OCCUPANCY - BUSINESS  
150 FT. (W/O SPRINKLER SYSTEM)  
250 FT. (W/SPRINKLER SYSTEM)

NOTE!

TRAVEL DISTANCES SHOWN ARE MAXIMUM FOR EMERGENCY EGRESS.  
SECONDARY EXIT EGRESS AND NON-EMERGENCY EGRESS - ALL OTHER  
TRAVEL DISTANCES ARE LESS THAN THAT SHOWN

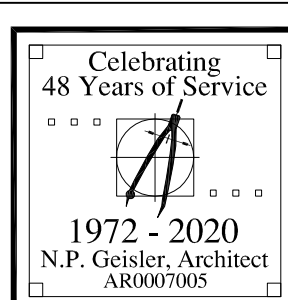
REVISIONS
1

SOFTPLAN  
SOFTWARE FOR ARCHITECTS

W.M. C. 1777

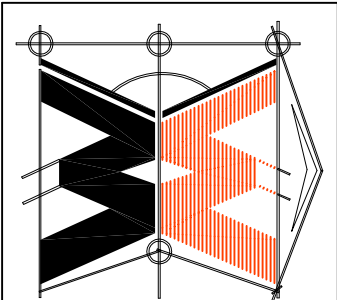
NEW OFFICE BUILDING for  
**CAPITAL METAL SUPPLY**  
COLUMBIA COUNTY, FLORIDA

AR0007005



JOINT VENTURED WITH

© WILLIAM MYERS  
DESIGN  
P.O. BOX 788  
LAKE PARK, FL 32909  
(386) 758-8406  
WILLIAMMYERSDESIGN.COM



JOB NUMBER  
2K2096

DATE  
01 DEC 2020

SHEET NUMBER  
LSP.1  
OF 1 SHEETS