



Crews Engineering Services, LLC

Crews Engineering Services, LLC
349 Crews Farm Ter
Lake City, FL 32025
386.623.4303

brett@crewsengineeringservices.com

December 19, 2018

Attn: Troy Crews
Columbia County Building Department
Lake City, FL

RE: Stone Residence Permit # __000036991__
Over-framing notes and revisions



Figure 1



Figure 2

In the location above (Figure 1) there was insufficient support at the bottom of the over-framed rafters. A header was required (Figure 2) along with Simpson fasteners to each rafter. The repair is in accordance with Section 2308 of the 2017 FBC.



Figure 3

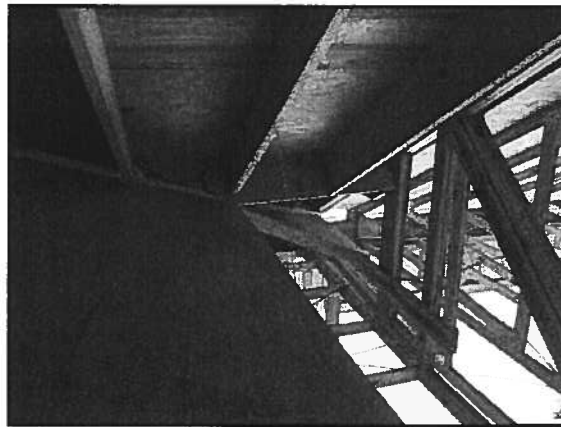


Figure 4

In the above location (Figure 3) a 2x12 valley rafter is being used as a beam to support the conventional framed rafters. The beam is sufficient but it was not supported by the girder truss as it should be. Webbing has been added and Simpson SDWC screws (Figure 4) have been used to repair this area. The repair is in accordance with Section 2308 of the 2017 FBC.

Ridge board note: Along the attic gangway, an LVL ridge board has been used. This area is framed as a compression roof system and the ridge board is not a structural member supporting any vertical loads. The ridge board is in accordance with FBC 2308.7.3.

Sincerely,

Brett A. Crews

Digitally signed by
Brett A. Crews
Date: 2018.12.19
20:21:28-05'00'

Brett A. Crews, PE

