

TABLE 1 BOW/RAFTER FRAME, END POST, GROUND ANCHOR AND PANEL FASTENER SPACING SPECIFICATIONS						
RISK CATEGORY	WIND EXPOSURE CATEGORY	ULTIMATE WIND SPEED (MPH)	NOMINAL WIND SPEED (MPH)	MAXIMUM RAFTER/BOW AND END POST SPACING (FEET)	AVERAGE FASTENER SPACING ON-CENTERS ALONG RAFTERS OR PURLINS, AND POSTS OR GIRTS (INCHES)	
					INTERIOR BOWS/RAFTERS	END BOWS/RAFTERS
I, II, III, or IV	B, C, or D	115 TO 150	89 TO 116	5.0	6	6
		151 TO 180	117 TO 139	4.0	6	6
NOTES: 1. SPECIFICATIONS APPLICABLE TO 26 OR 29 GAUGE METAL PANELS FASTENED DIRECTLY TO 12,14 OR 15 GAUGE STEEL TUBE BOW FRAMES. 2. FASTENERS CONSIST OF #12-14X3/4" SDFS SELF-DRILLING SCREWS WITH CONTROL SEAL WASHER. 3. SPECIFICATIONS APPLICABLE ONLY FOR MEAN ROOF HEIGHT OF 20 FEET OR LESS, AND ROOF SLOPES OF 14°(3:12 PITCH). SPACING REQUIREMENTS FOR OTHER ROOF HEIGHTS AND/OR SLOPES MAY VARY. 4. GROUND ANCHOR REQUIREMENTS ARE 1 @ EACH CORNER AND ONE EVERY OTHER INTERIOR BOW/RAFTER POST LOCATION, AT MAXIMUM OF 10' O.C., AND BOTH SIDES OF OPENINGS WHERE BASE RAIL IS ABSENT. 5. GROUND ANCHORS ARE NOT REQUIRED WITH CONCRETE SLAB CONSTRUCTION.						

WINDOW AND DOOR NOTE

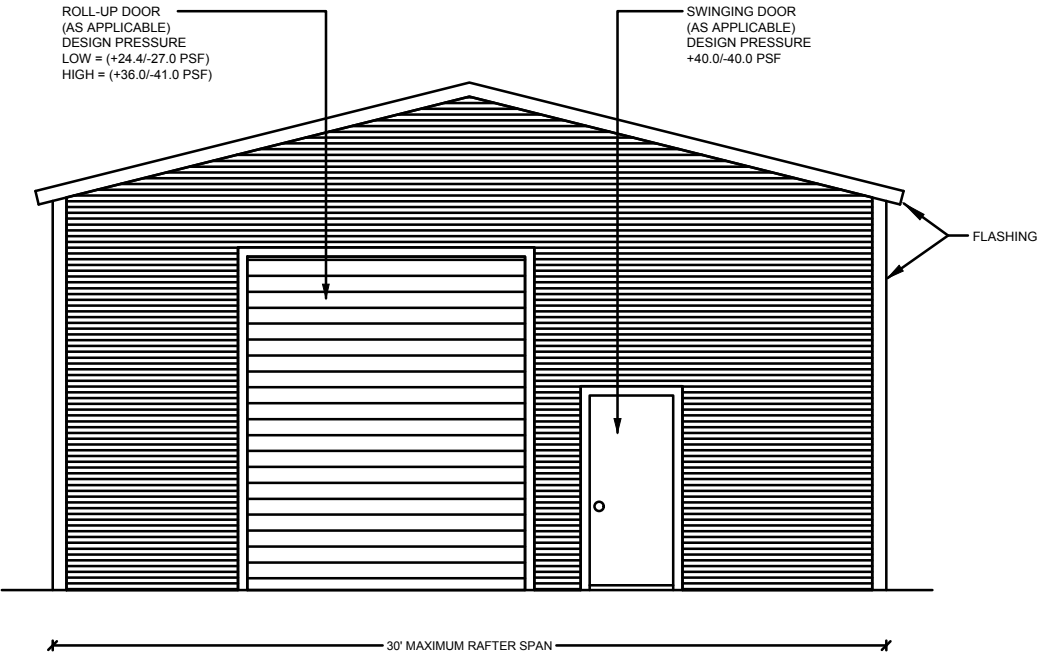
EXTERIOR WINDOWS AND GLASS DOORS SHALL BE TESTED BY AN APPROVED INDEPENDENT TESTING LABORATORY, AND BEAR AN AAMA OR WDMA OR OTHER APPROVED LABEL IDENTIFYING THE MANUFACTURER, PERFORMANCE CHARACTERISTICS AND APPROVED PRODUCT EVALUATION ENTITY TO INDICATE COMPLIANCE WITH THE REQUIREMENTS OF THE FOLLOWING SPECIFICATION.

ANSI/AAMA/NWDA 101/1S 2/97
THE CONSTRUCTION SHALL BE TESTED IN ACCORDANCE WITH ASTM E 330, STANDARD TEST METHODS FOR STRUCTURAL PERFORMANCE OF EXTERIOR WINDOWS, CURTAIN WALLS, AND DOORS BY UNIFORM STATIC AIR PRESSURE.

DESIGN WAS DONE IN ACCORDANCE WITH THE 2020 FLORIDA BUILDING CODE 7TH EDITION(FBC) 2020 SUPPLEMENT AMENDMENTS 2006 INTERNATIONAL BUILDING CODE (IBC), 2009 IBC AND 2012 IBC.

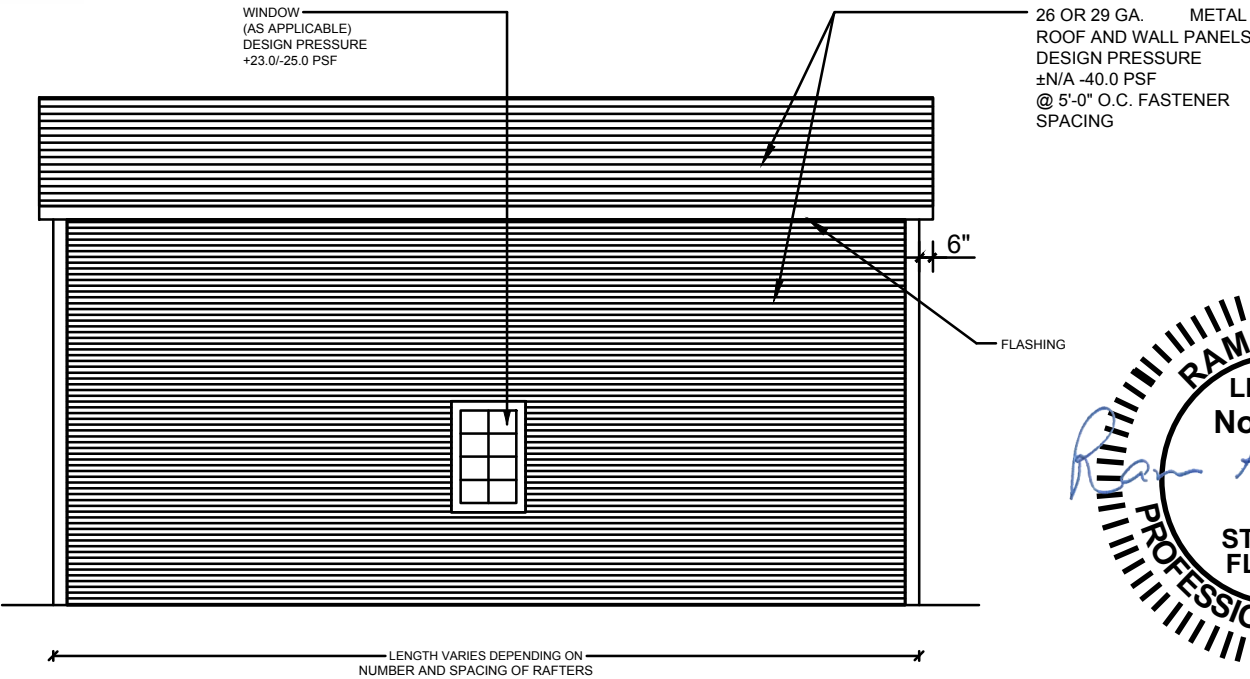
GENERAL NOTES:

- ALL STEEL SHALL BE 50 KSI STEEL.
- FASTEN METAL ROOF AND WALL PANELS TO FRAMING WITH 1/4" X 3/4" SELF DRILLING FASTENERS WITH CONTROL SEAL WASHER @ 6" O.C. AVERAGE.
- ALL FIELD CONNECTIONS SHALL BE #12-14X3/4" SDFS SELF DRILLING SCREWS.
- ALL SHOP CONNECTIONS SHALL BE WELDED.
- CONCRETE EXPANSION ANCHORS SHALL BE WEJ-IT ANKR-TITE MODEL AT 1252, OR SLEEVE ANCHOR MODEL HSA 1260, OR EQUIVALENT. GROUND ANCHOR REQUIREMENTS ARE 1@ EACH CORNER & ONE EVERY OTHER INTERIOR RAFTER POST LOCATION. AT A MAXIMUM 10'-0" O.C., AND BOTH SIDES OF OPENINGS WHERE BASE RAIL IS ABSENT. GROUND ANCHORS ARE NOT REQUIRED FOR CONCRETE FOOTING AND/OR CONCRETE SLAB CONSTRUCTION.
- POST/RAFTER BRACING: BRACE ON EVERY POST/RAFTER CONNECTION, EXCEPT FOR END WALLS.



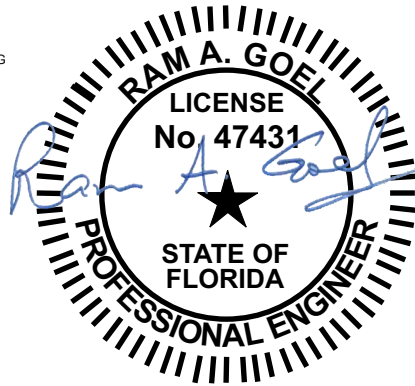
TYPICAL END ELEVATION-HORIZONTAL ROOF

SCALE: NOT TO SCALE



TYPICAL SIDE ELEVATION-HORIZONTAL ROOF

SCALE: NOT TO SCALE



THE FOLLOWING IS COMPLIANT TO THE FLORIDA BUILDING CODE 2020, 7TH EDITION AND ASCE 7-16 FOR WIND LOADS OF 180 MPH

- NOTE:
- THIS ITEM HAS BEEN SIGNED AND SEALED BY RAM A. GOEL USING A DIGITAL SIGNATURE & DATE.
 - PRINTED COPIES OF THIS DOCUMENT ARE NOT CONSIDERED SIGNED & SEALED. THIS SIGNATURE MUST BE VERIFIED ON ANY ELECTRONIC COPIES.

THIS DRAWING IS AN INSTRUMENT OF SERVICE AND SHALL REMAIN THE PROPERTY OF THE ENGINEER, AND SHALL NOT BE REPRODUCED, PUBLISHED OR USED IN ANY WAY WITHOUT THE WRITTEN CONSENT OF THE ENGINEER. COPYRIGHT 2021 NOT PUBLISHED THIS IS TO CERTIFY THAT I HAVE REVIEWED THIS PLAN AND FOUND TO BE IN COMPLIANCE WITH CHAPTER 16 OF 2020 7TH EDITION FLORIDA BUILDING CODE AND APPLICABLE SUPPLEMENTS.

RAM A. GOEL, P.E. # 47431

COPIES OF THESE PLANS ARE NOT VALID UNLESS EMBOSSED WITH THE SIGNING ENGINEER'S SEAL



DR. RAM A. GOEL, PH.D., P.E.
F.P.E. 47431.
SONEY FM LLC
CORY LAKE PROFESSIONAL CENTER
10329 CROSS CREEK BLVD., SUITE P
TAMPA, FL 33647
Ph: 727-420-4796
Fax: (813) 972-2846
www.soneyfmllc.com

Job # 2173

Drawn By: S.K.

Checked By: R.G.

Issue Date:08-18-21

Revisions:		
No.	Date	Description
1	11	
2	11	
3	11	
4	11	

PREFABRICATED UTILITY STRUCTURE

ELITE METAL MANUFACTURING,LLC
10121 88TH TRACE
LIVE OAK, FL 32060

DR. RAM A. GOEL, PH.D., P.E.
F.P.E. 47431.

SONEY FM LLC
CORY LAKE PROFESSIONAL CENTER
10329 CROSS CREEK BLVD., SUITE P
TAMPA, FL 33647
Ph: 727-420-4796
Fax: (813) 972-2846
www.soneyfmllc.com

Job # 21731

Drawn By: S.K.

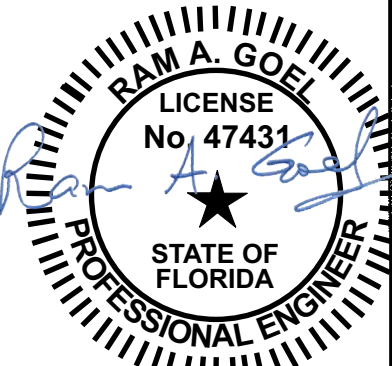
Checked By: R.G.

Issue Date: 08-18-21

No.	Date	Description
1	11	
2	11	
3	11	

PREFABRICATED UTILITY STRUCTURE

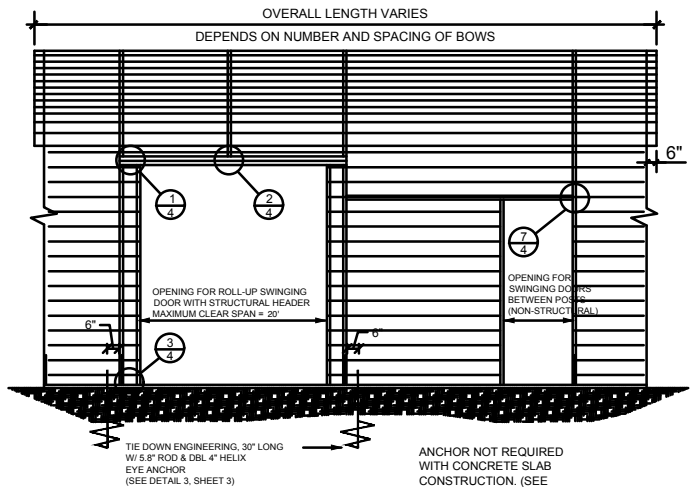
ELITE METAL MANUFACTURING, LLC
10121 88TH TRACE
LIVE OAK, FL 32060



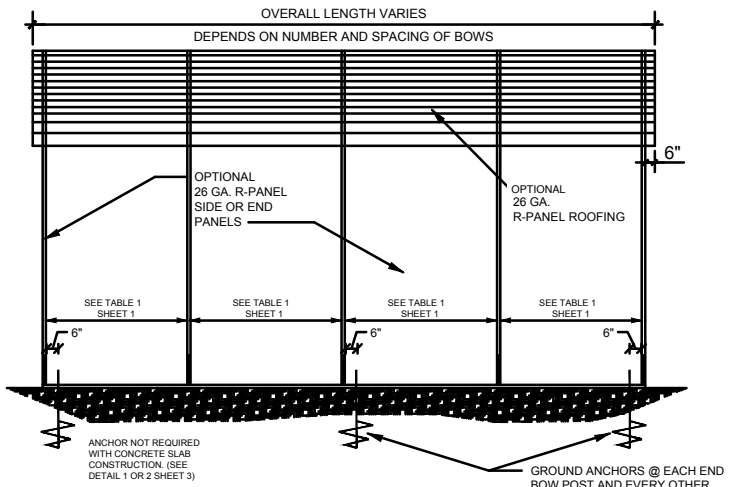
THE FOLLOWING IS COMPLIANT TO THE FLORIDA
BUILDING CODE 2020, 7TH EDITION AND ASCE 7-16 FOR
WIND LOADS OF 180 MPH

RAM A. GOEL, P.E. # 47431

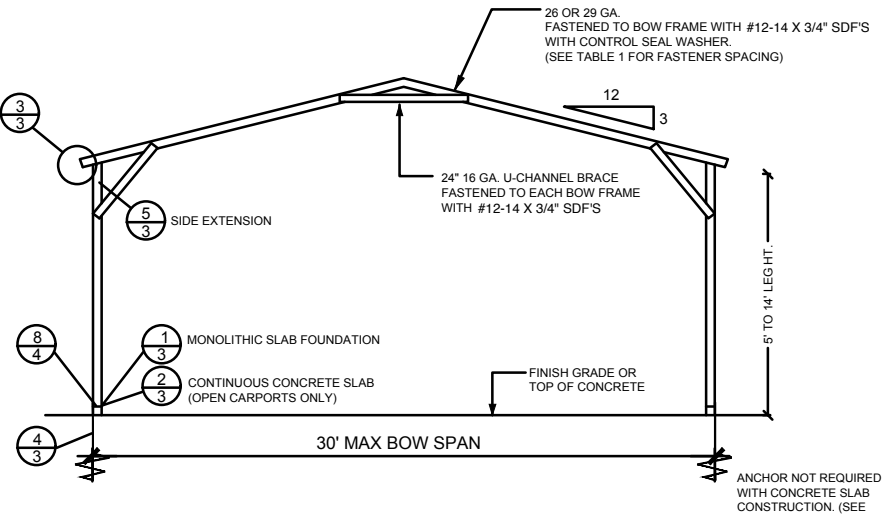
COPIES OF THESE PLANS ARE NOT VALID UNLESS
EMBOSSED WITH THE SIGNING ENGINEER'S SEAL



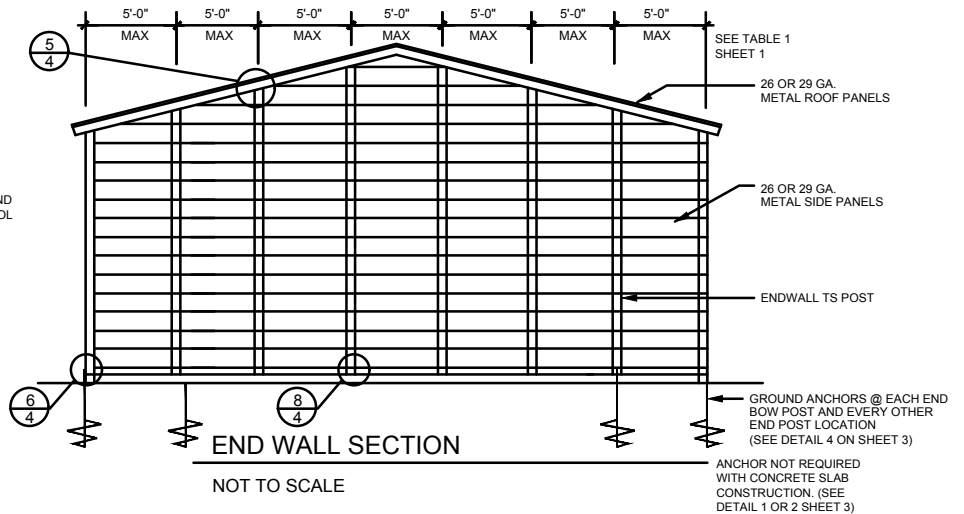
SIDE OPENINGS
NOT TO SCALE



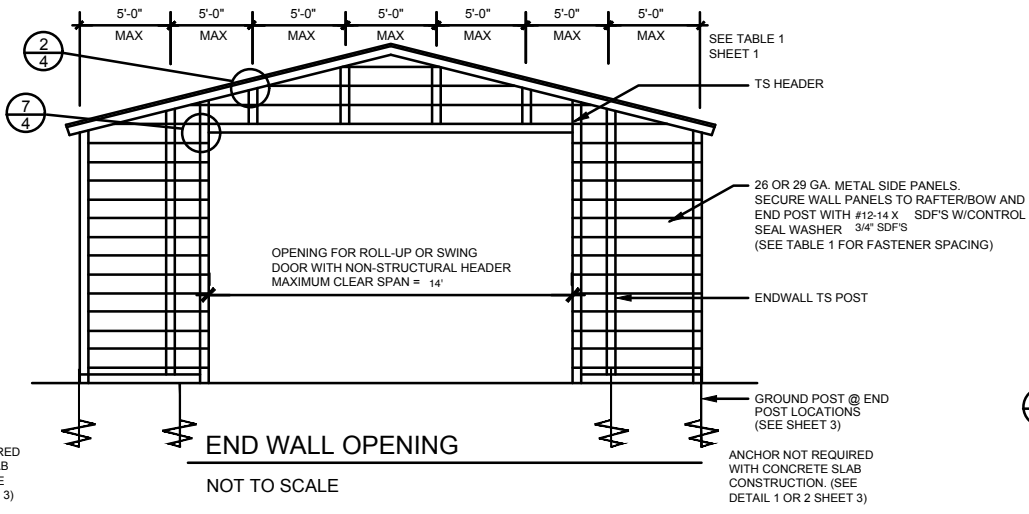
SIDE ELEVATION
NOT TO SCALE



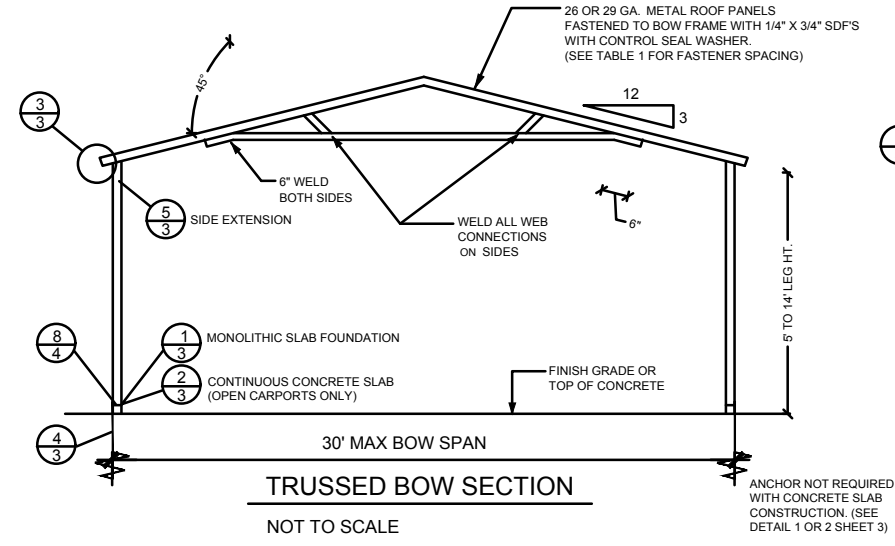
TYPICAL BOW SECTION
NOT TO SCALE



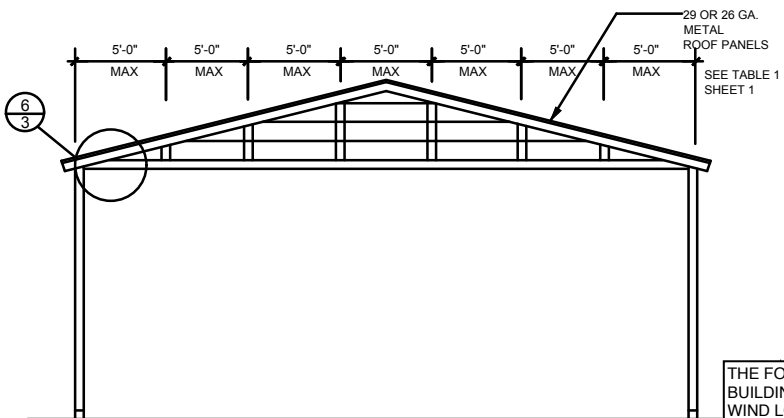
END WALL SECTION
NOT TO SCALE



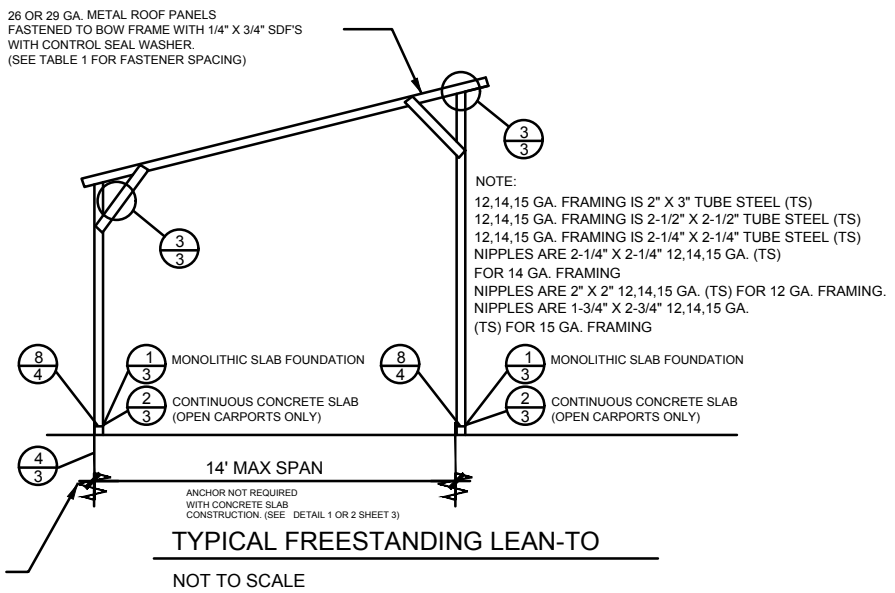
END WALL OPENING
NOT TO SCALE



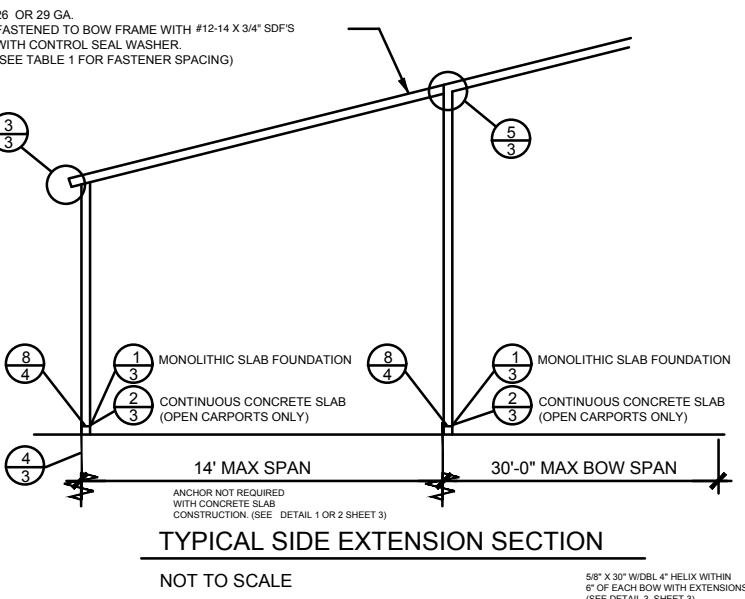
TRUSSED BOW SECTION
NOT TO SCALE



GABLED OPEN END WALL SECTION
NOT TO SCALE



TYPICAL FREESTANDING LEAN-TO
NOT TO SCALE



TYPICAL SIDE EXTENSION SECTION
NOT TO SCALE

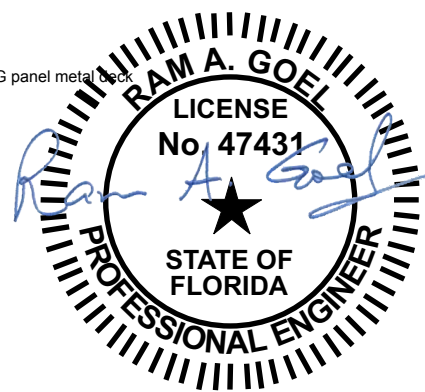
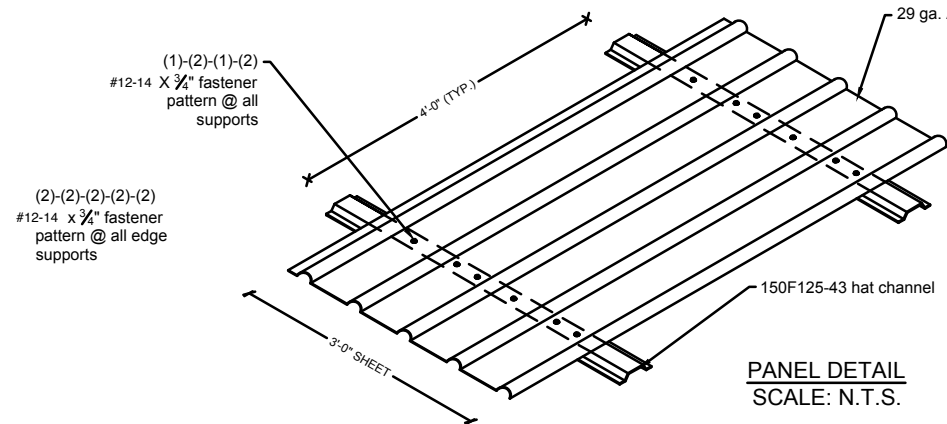
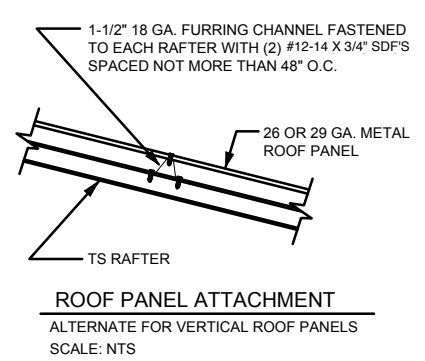
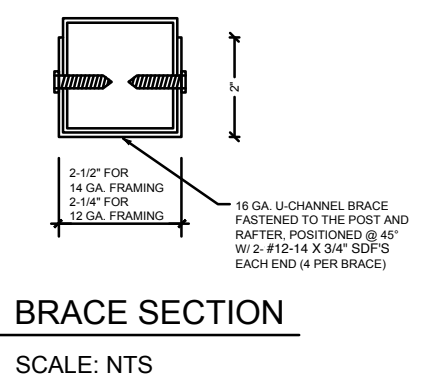
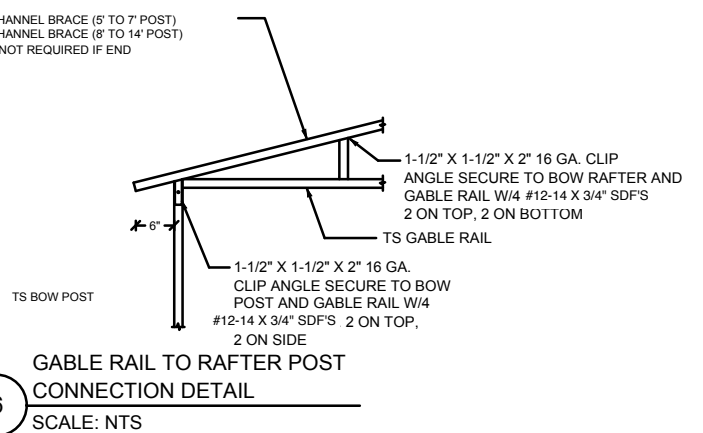
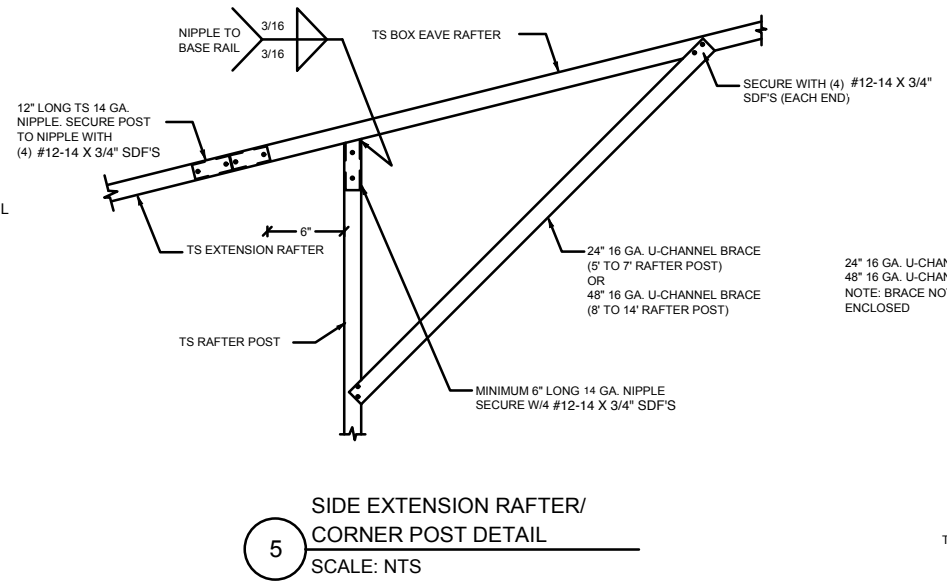
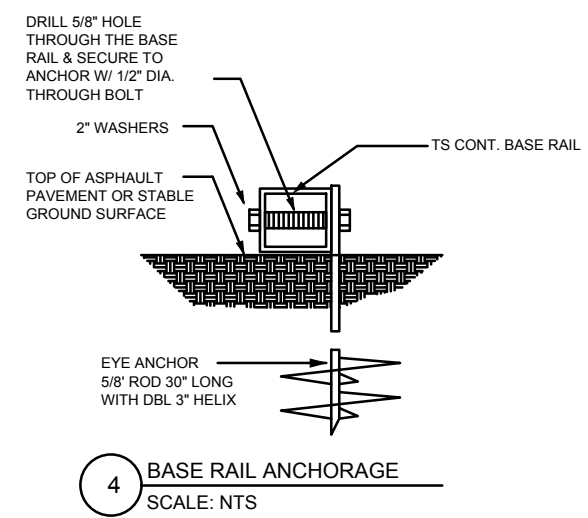
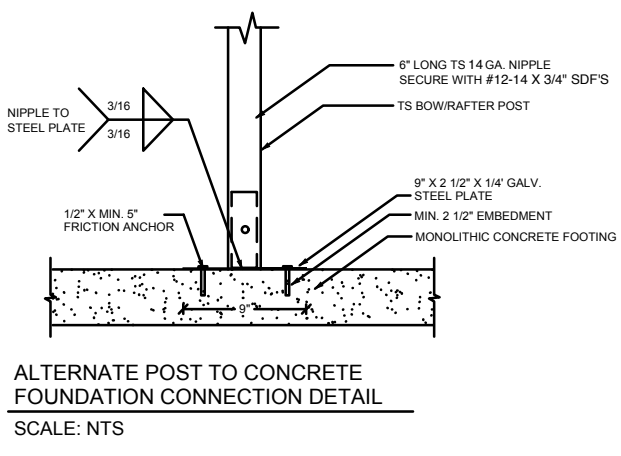
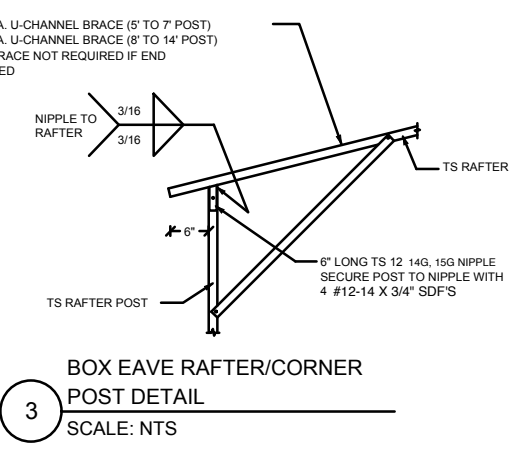
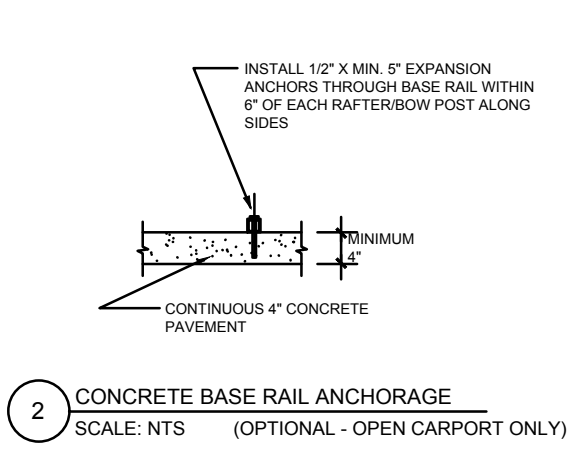
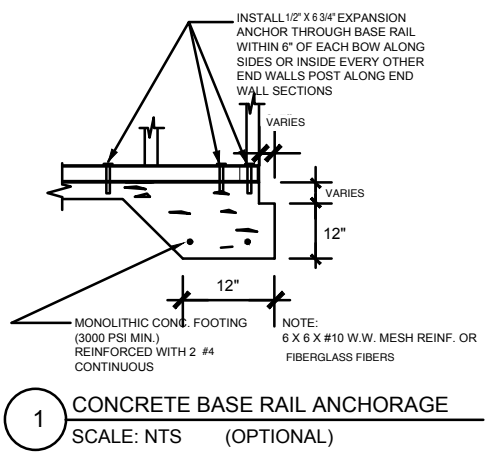
- NOTE:
1. THIS ITEM HAS BEEN SIGNED AND SEALED BY
RAM A. GOEL USING A DIGITAL SIGNATURE & DATE.
 2. PRINTED COPIES OF THIS DOCUMENT ARE NOT
CONSIDERED SIGNED & SEALED. THIS SIGNATURE MUST
BE VERIFIED ON ANY ELECTRONIC COPIES.

DR. RAM A. GOEL, PH.D., P.E.
F.P.E. 47431.
SONEY FM LLC
CORY LAKE PROFESSIONAL CENTER
10329 CROSS CREEK BLVD., SUITE P
TAMPA, FL 33647
Ph: 727-420-4796
Fax: (813) 972-2846
www.soneyfmllc.com

Job # 2173
Drawn By: S.K.
Checked By: R.G.

Issue Date: 08-18-21		
Revisions:		
No.	Date	Description
1	11	
2	11	
3	11	
4	11	

PREFABRICATED UTILITY STRUCTURE
ELITE METAL MANUFACTURING, LLC
10121 88TH TRACE
LIVE OAK, FL 32060



THE FOLLOWING IS COMPLIANT TO THE FLORIDA BUILDING CODE 2020, 7TH EDITION AND ASCE 7-16 FOR WIND LOADS OF 180 MPH

NOTE:
1. THIS ITEM HAS BEEN SIGNED AND SEALED BY RAM A. GOEL USING A DIGITAL SIGNATURE & DATE.
2. PRINTED COPIES OF THIS DOCUMENT ARE NOT CONSIDERED SIGNED & SEALED. THIS SIGNATURE MUST BE VERIFIED ON ANY ELECTRONIC COPIES.

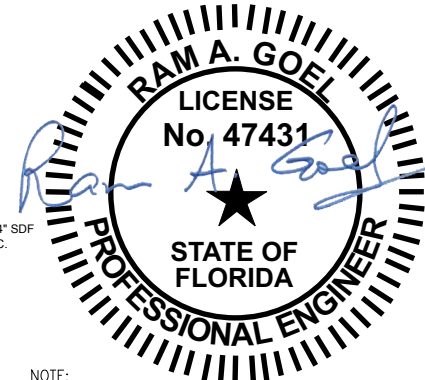
THIS DRAWING IS AN INSTRUMENT OF SERVICE AND SHALL REMAIN THE PROPERTY OF THE ENGINEER, AND SHALL NOT BE REPRODUCED, PUBLISHED OR USED IN ANY WAY WITHOUT THE WRITTEN CONSENT OF THE ENGINEER. COPYRIGHT 2021. NOT PUBLISHED. THIS IS TO CERTIFY THAT I HAVE REVIEWED THIS PLAN AND FOUND TO BE IN COMPLIANCE WITH CHAPTER 16 OF 2020 7TH EDITION FLORIDA BUILDING CODE AND APPLICABLE SUPPLEMENTS.
RAM A. GOEL, P.E. # 47431
COPIES OF THESE PLANS ARE NOT VALID UNLESS EMBOSSED WITH THE SIGNING ENGINEER'S SEAL

DR. RAM A. GOEL, PH.D., P.E.
F.P.E. 47431
SONEY FM LLC
CORY LAKE PROFESSIONAL CENTER
10329 CROSS CREEK BLVD., SUITE P
TAMPA, FL 33647
Ph: 727-420-4796
Fax: (813) 972-2846
www.soneyfmllc.com

Job # 2173
Drawn By: S.K.
Checked By: R.G.

Issue Date: 08-18-21		
Revisions:		
No.	Date	Description
Δ / /		
Δ / /		
Δ / /		

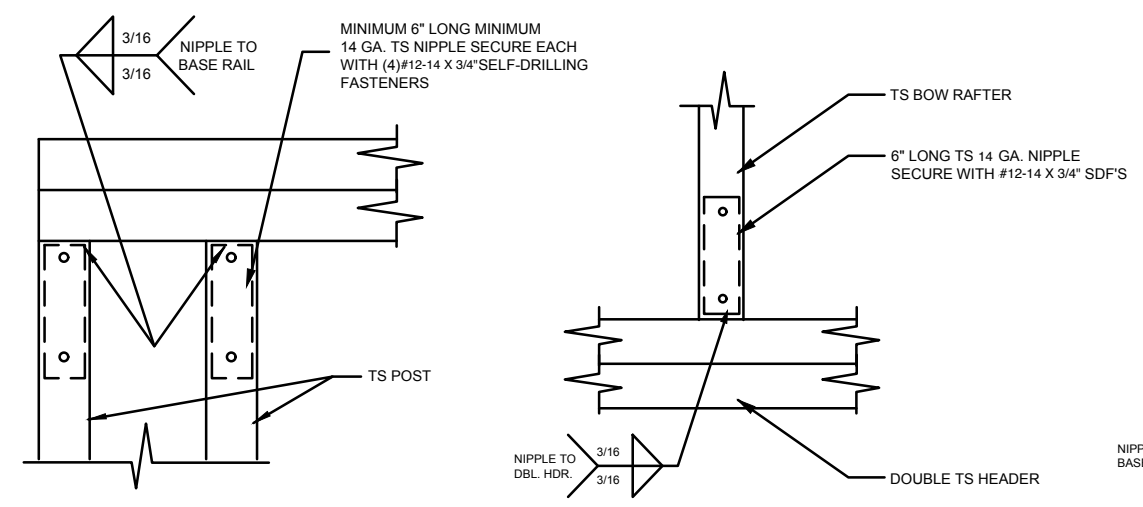
PREFABRICATED UTILITY STRUCTURE
ELITE METAL MANUFACTURING, LLC
10121 88TH TRACE
LIVE OAK, FL 32060



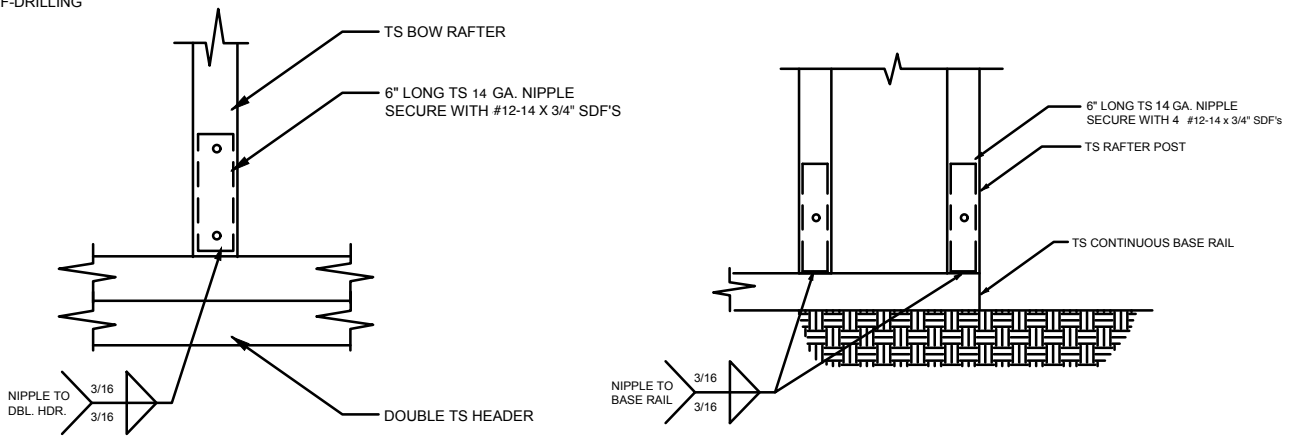
NOTE:
1. THIS ITEM HAS BEEN SIGNED AND SEALED BY RAM A. GOEL USING A DIGITAL SIGNATURE & DATE.
2. PRINTED COPIES OF THIS DOCUMENT ARE NOT CONSIDERED SIGNED & SEALED. THIS SIGNATURE MUST BE VERIFIED ON ANY ELECTRONIC COPIES.

THE FOLLOWING IS COMPLIANT TO THE FLORIDA BUILDING CODE 2020, 7TH EDITION AND ASCE 7-16 FOR WIND LOADS OF 180 MPH

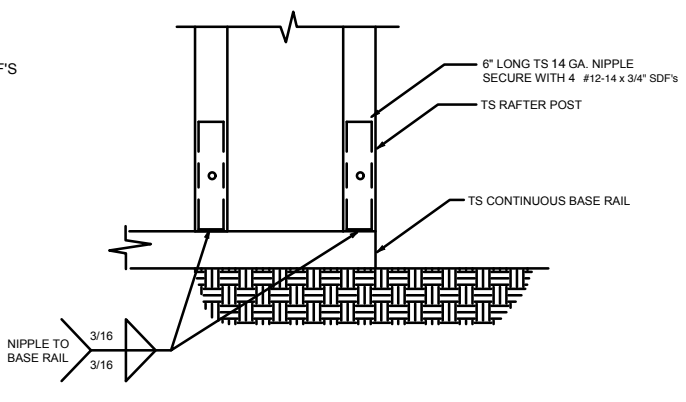
THIS DRAWING IS AN INSTRUMENT OF SERVICE AND SHALL REMAIN THE PROPERTY OF THE ENGINEER, AND SHALL NOT BE REPRODUCED, PUBLISHED OR USED IN ANY WAY WITHOUT THE WRITTEN CONSENT OF THE ENGINEER. COPYRIGHT 2021. NOT PUBLISHED. THIS IS TO CERTIFY THAT I HAVE REVIEWED THIS PLAN AND FOUND TO BE IN COMPLIANCE WITH CHAPTER 16 OF 2020 7TH EDITION FLORIDA BUILDING CODE AND APPLICABLE SUPPLEMENTS.
RAM A. GOEL, P.E. # 47431
COPIES OF THESE PLANS ARE NOT VALID UNLESS EMBOSSED WITH THE SIGNING ENGINEER'S SEAL



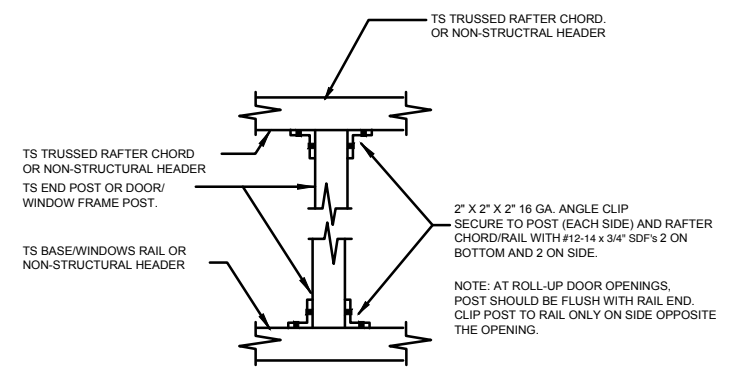
1 RAFTER POST/DBL. HEADER DETAIL
SCALE: NTS



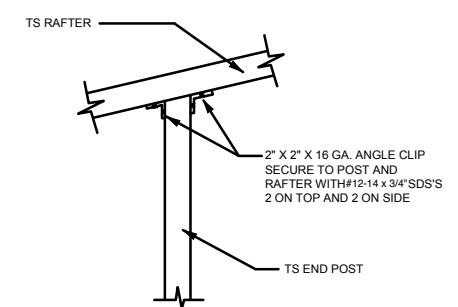
2 RAFTER POST/BASE BASE RAIL CONNECTION DETAIL
SCALE: NTS



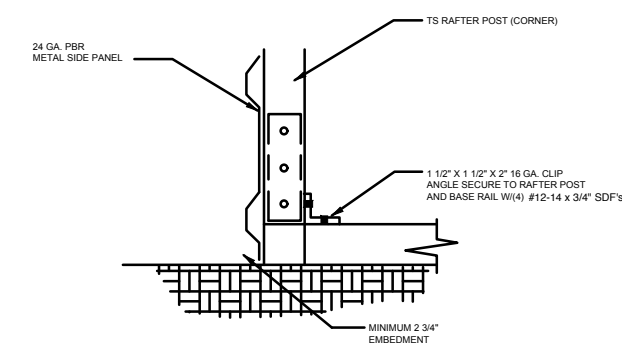
3 RAFTER POST/BASE BASE RAIL CONNECTION DETAIL
SCALE: NTS



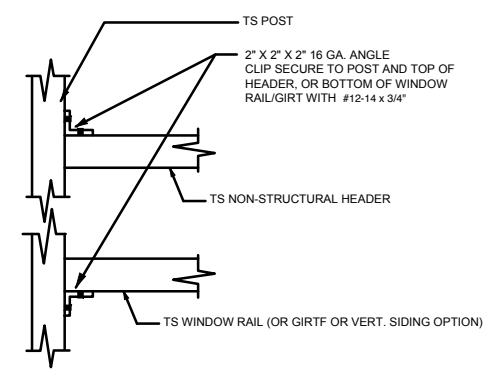
4 POST TO RAIL, TRUSS CHORD, OR NON-STRUCTURAL HEADER CONN. DETAIL
SCALE: NTS



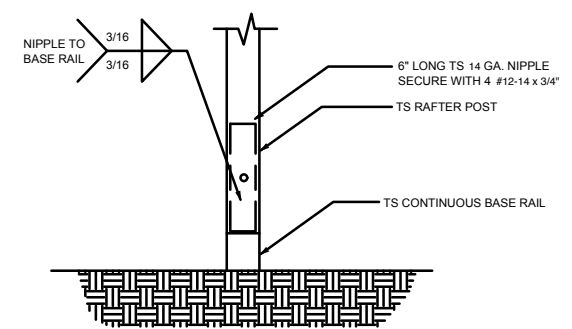
5 END POST/RAFTER CONN. DETAIL
SCALE: NTS



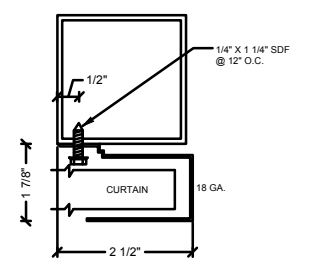
6 END POST/BASE RAIL CONN. DETAIL
SCALE: NTS



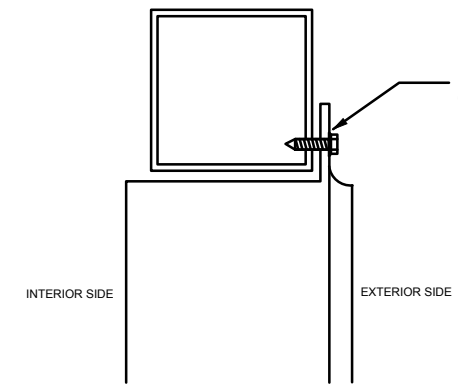
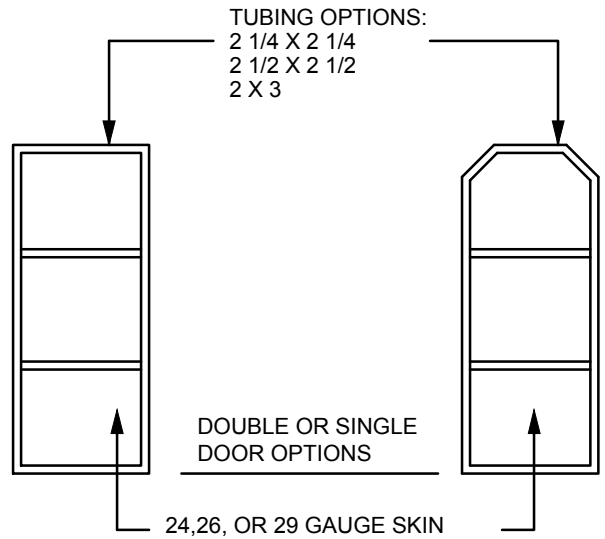
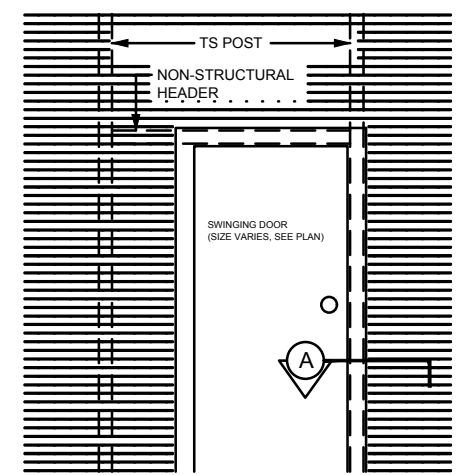
7 NON-STRUCTURAL HEADER, WINDOW RAIL, OR GIRT TO POST CONN. DETAIL
SCALE: NTS



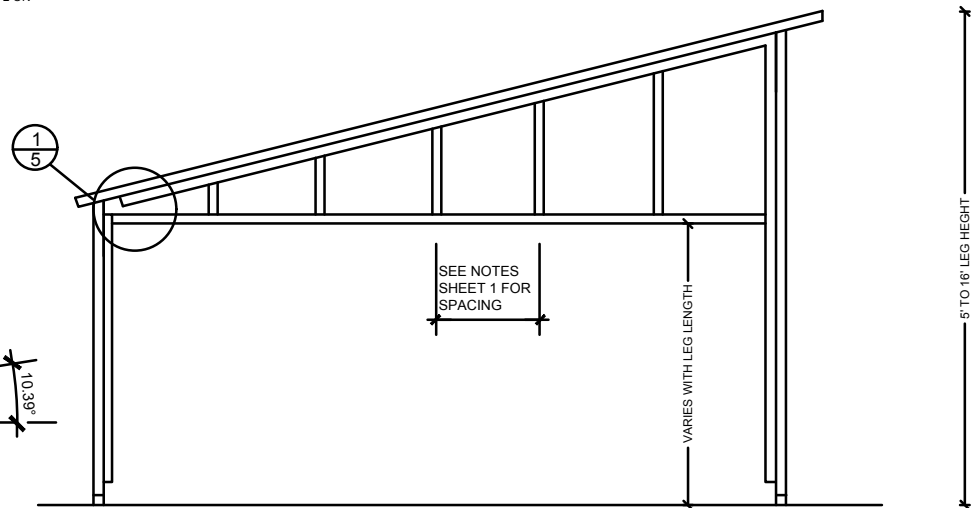
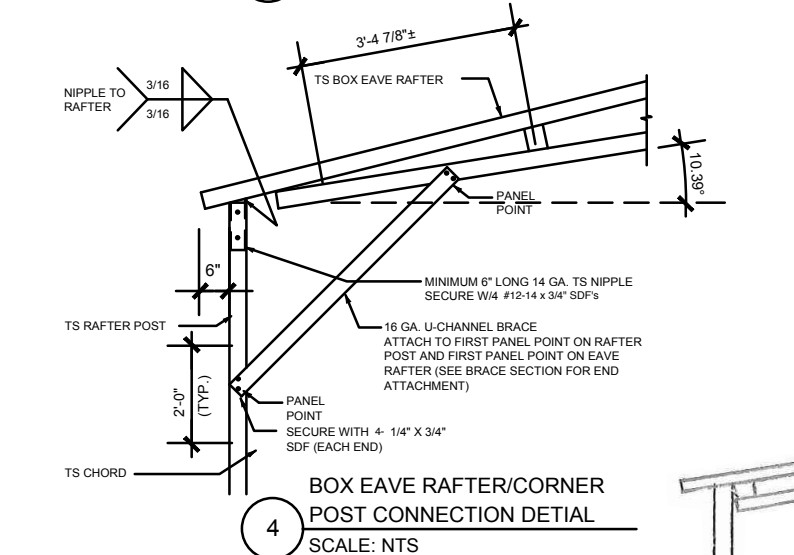
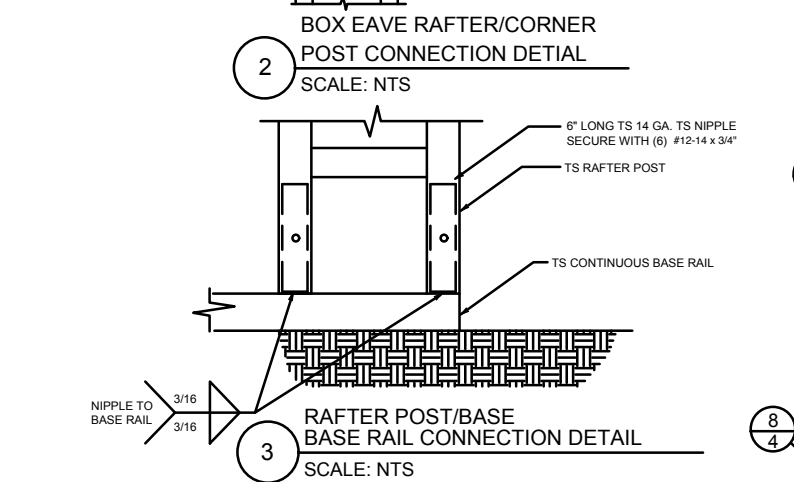
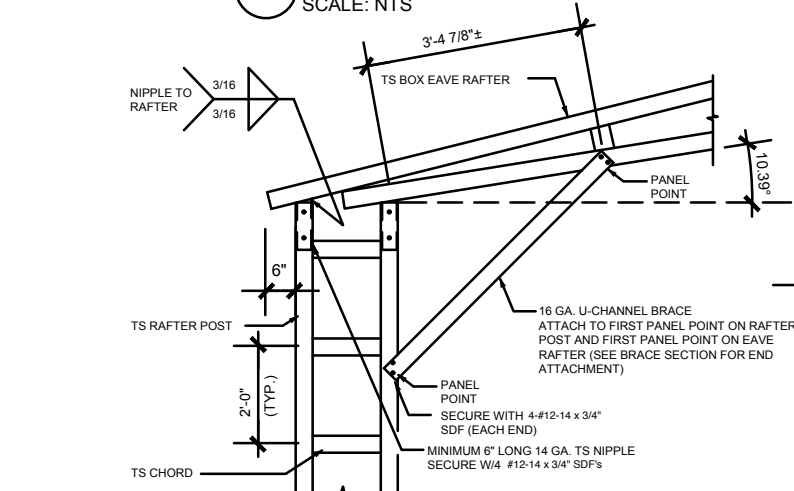
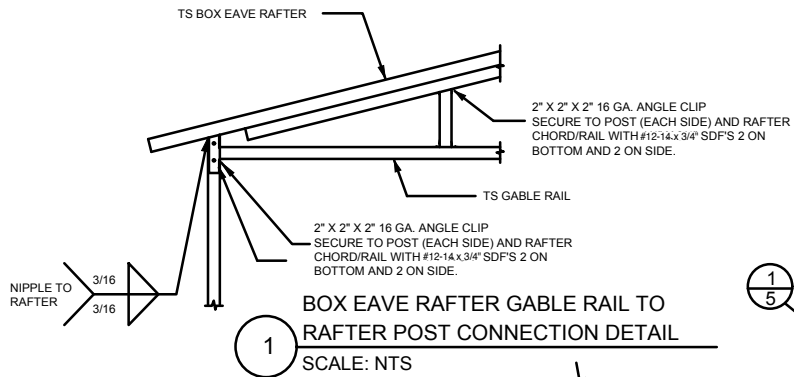
8 POST/BASE RAIL CONN. DETAIL
SCALE: NTS



SECTION THROUGH ROLL UP DOOR HEADER
SCALE: NTS
CURTAIN 24 GA. PBR WITH BAKED ON EPOXY PRIMER & POLYESTER TOP COAT.

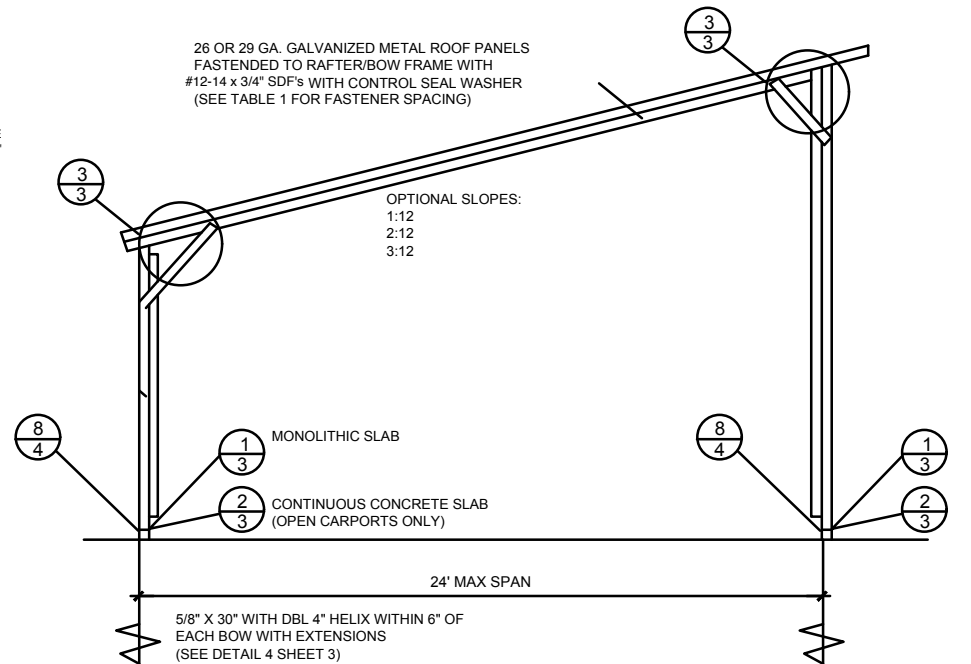


A SECTION
SCALE: NTS



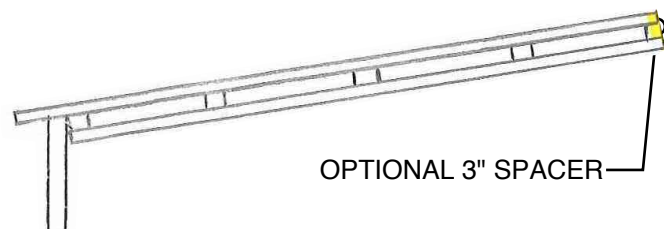
TYPICAL BOX EAVE RAFTER GABLE END FRAMING SECTION

NOT TO SCALE

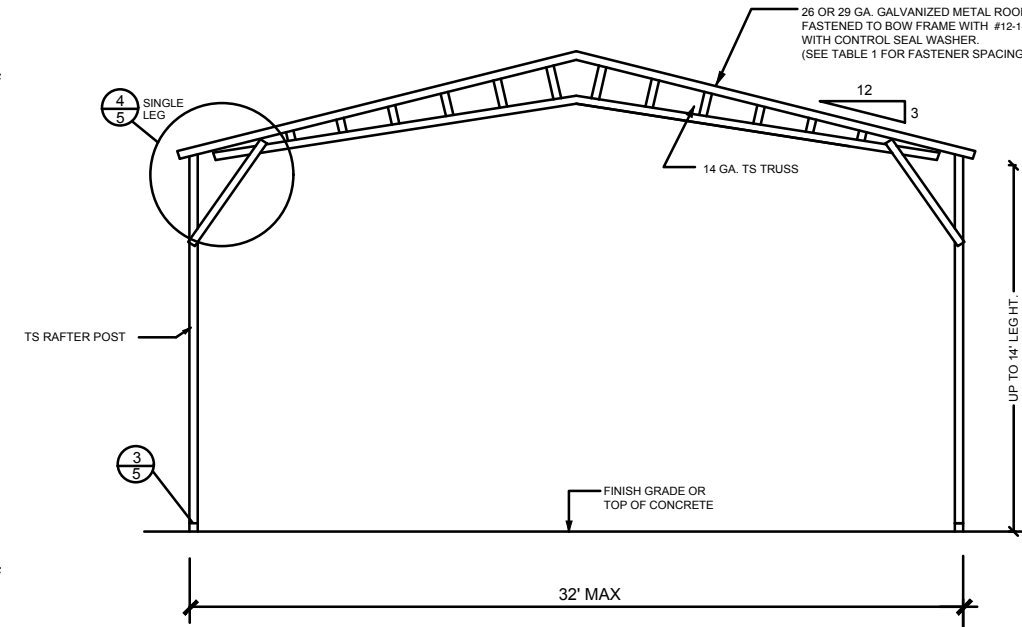


TYPICAL FREE STANDING LEAN-TO

NOT TO SCALE

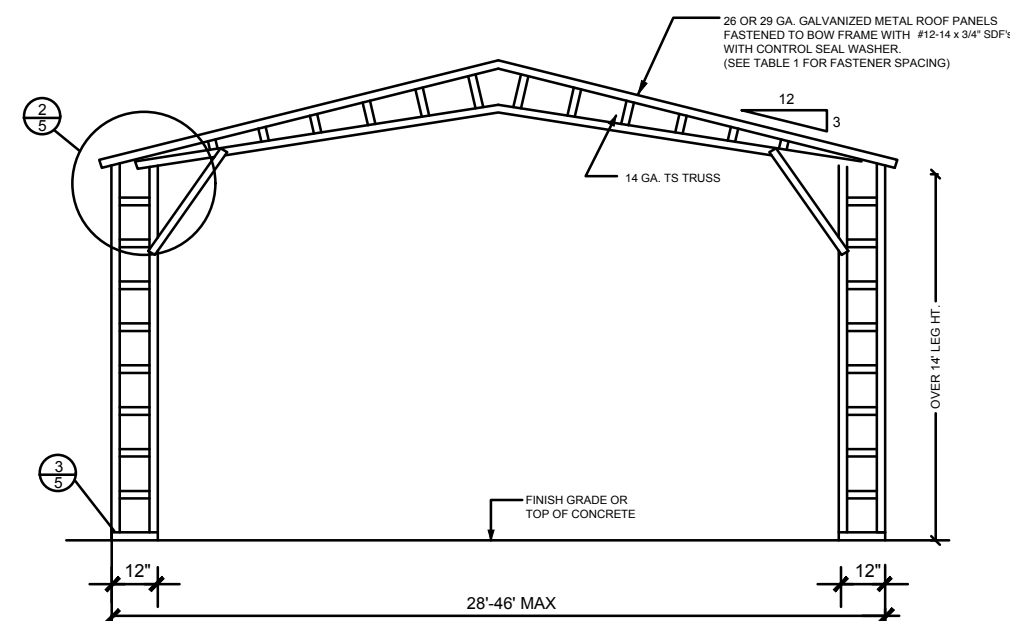


OPTIONAL 3" SPACER



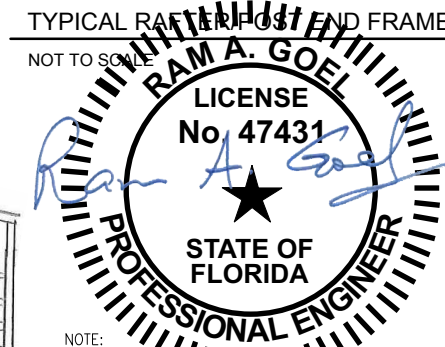
TYPICAL RAFTER/POST END FRAME SECTION

NOT TO SCALE



TYPICAL RAFTER/POST END FRAME SECTION

NOT TO SCALE



NOTE:
1. THIS ITEM HAS BEEN REVIEWED AND SEALED BY RAM A. GOEL USING A DIGITAL SIGNATURE & DATE.
2. PRINTED COPIES OF THIS DOCUMENT ARE NOT CONSIDERED SIGNED & SEALED. THIS SIGNATURE MUST BE VERIFIED ON ANY ELECTRONIC COPIES.

THE FOLLOWING IS COMPLIANT TO THE FLORIDA BUILDING CODE 2020, 7TH EDITION AND ASCE 7-16 FOR WIND LOADS OF 180 MPH

RAM A. GOEL, P.E. # 47431

COPIES OF THESE PLANS ARE NOT VALID UNLESS EMBOSSED WITH THE SIGNING ENGINEER'S SEAL



DR. RAM A. GOEL, PH.D., P.E.
F.P.E. 47431.
SONEY FM LLC
CORY LAKE PROFESSIONAL CENTER
10329 CROSS CREEK BLVD., SUITE P
TAMPA, FL 33647
Ph: 727-420-4796
Fax: (813) 972-2846
www.soneyfmllc.com

Job # 2173

Drawn By: S.K.

Checked By: R.G.

Issue Date: 08-18-21

No.	Date	Description
Δ / /		
Δ / /		
Δ / /		
Δ / /		

PREFABRICATED UTILITY STRUCTURE

ELITE METAL MANUFACTURING, LLC
10121 88TH TRACE
LIVE OAK, FL 32060

5



REINFORCING STEEL:
THE REINFORCING STEEL SHALL BE MINIMUM GRADE 40.

REINFORCEMENT MAY BE BENT IN THE SHOP OR THE FIELD PROVIDED:

1. ALL REINFORCEMENT IS BENT COLD
2. THE DIAMETER OF THE BEND, MEASURED ON THE INSIDE OF THE BAR, IS NOT LESS THAN 6-BAR DIAMETERS AND
3. REINFORCEMENT PARTIALLY EMBEDDED IN CONCRETE SHALL NOT BE FIELD BENT.

NOTE:

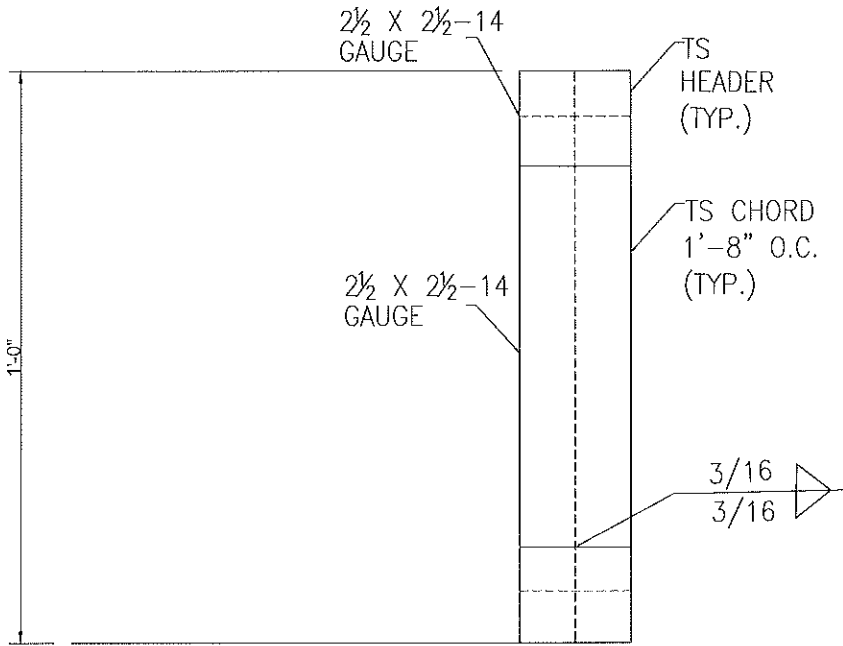
1. THIS ITEM HAS BEEN SIGNED AND SEALED BY
RAM A. GOEL USING A DIGITAL SIGNATURE & DATE.
2. PRINTED COPIES OF THIS DOCUMENT ARE NOT
CONSIDERED SIGNED & SEALED. THIS SIGNATURE MUST
BE VERIFIED ON ANY ELECTRONIC COPIES.

RAM A. GOEL, P.E. # 47431

Issue Date: 08-18-21		
Revisions:		
No.	Date	Description
△	11	
△	11	
△	11	
△	11	

6

OPTIONAL HEADER



HEADER DETAIL FOR DOOR
OPENINGS 12'-0" < LENGTH < 20'-0"
SCALE: N.T.S.



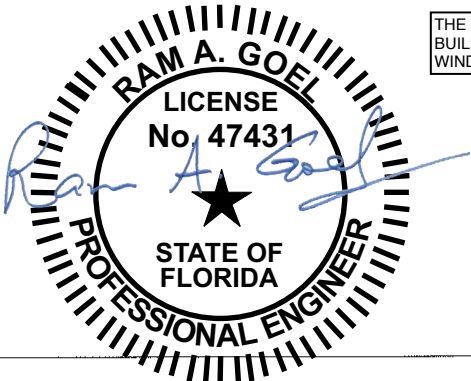
DR. RAM A. GOEL, PH.D., P.E.
F.P.E. 47431.
SONEY FM LLC
CORY LAKE PROFESSIONAL CENTER
10329 CROSS CREEK BLVD., SUITE P
TAMPA, FL 33647
Ph: 727-420-4796
Fax: (813) 972-2846
www.soneyfmllc.com

Job # 2173
Drawn By: S.K.
Checked By: R.G.

Issue Date: 08-18-21		
Revisions:		
No.	Date	Description
1		
2		
3		
4		

OPTIONAL HEADER

ELITE METAL MANUFACTURING, LLC
10121 88TH TRACE
LIVE OAK, FL 32060



THE FOLLOWING IS COMPLIANT TO THE FLORIDA
BUILDING CODE 2020, 7TH EDITION AND ASCE 7-16 FOR
WIND LOADS OF 180 MPH

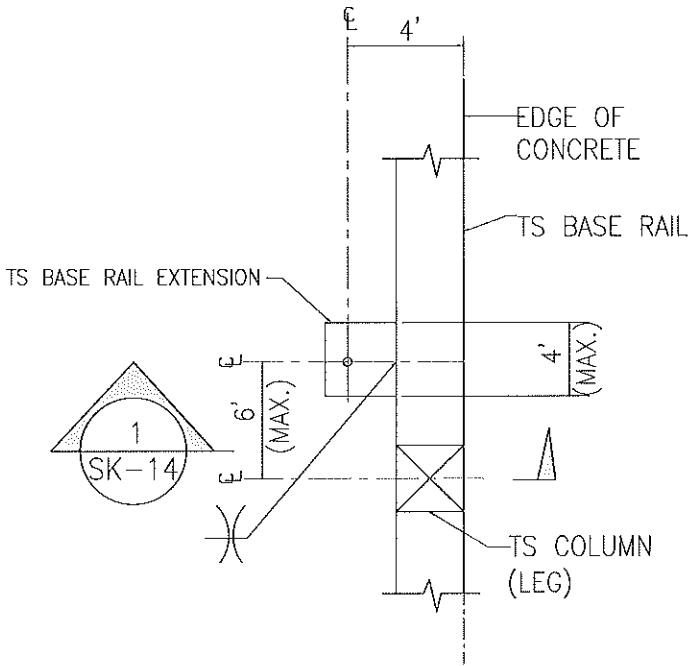
- NOTE:
1. THIS ITEM HAS BEEN SIGNED AND SEALED BY
RAM A. GOEL USING A DIGITAL SIGNATURE & DATE.
 2. PRINTED COPIES OF THIS DOCUMENT ARE NOT
CONSIDERED SIGNED & SEALED. THIS SIGNATURE MUST
BE VERIFIED ON ANY ELECTRONIC COPIES.

THIS DRAWING IS AN INSTRUMENT OF SERVICE AND SHALL REMAIN THE PROPERTY OF THE
ENGINEER, AND SHALL NOT BE REPRODUCED, PUBLISHED OR USED IN ANY WAY WITHOUT
THE WRITTEN CONSENT OF THE ENGINEER. COPYRIGHT 2021. NOT PUBLISHED.
THIS IS TO CERTIFY THAT I HAVE REVIEWED THIS PLAN AND FOUND IT TO BE IN COMPLIANCE
WITH CHAPTER 16 OF 2020 7TH EDITION FLORIDA BUILDING CODE AND APPLICABLE SUPPLEMENTS.

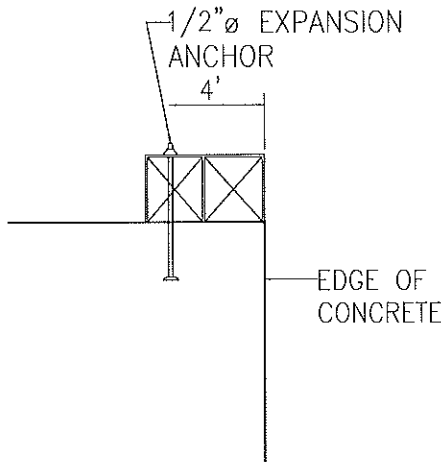
Dr. Ram A. Goel PE # 47431

COPIES OF THESE PLANS ARE NOT VALID UNLESS
EMBOSSED WITH THE SIGNING ENGINEER'S SEAL

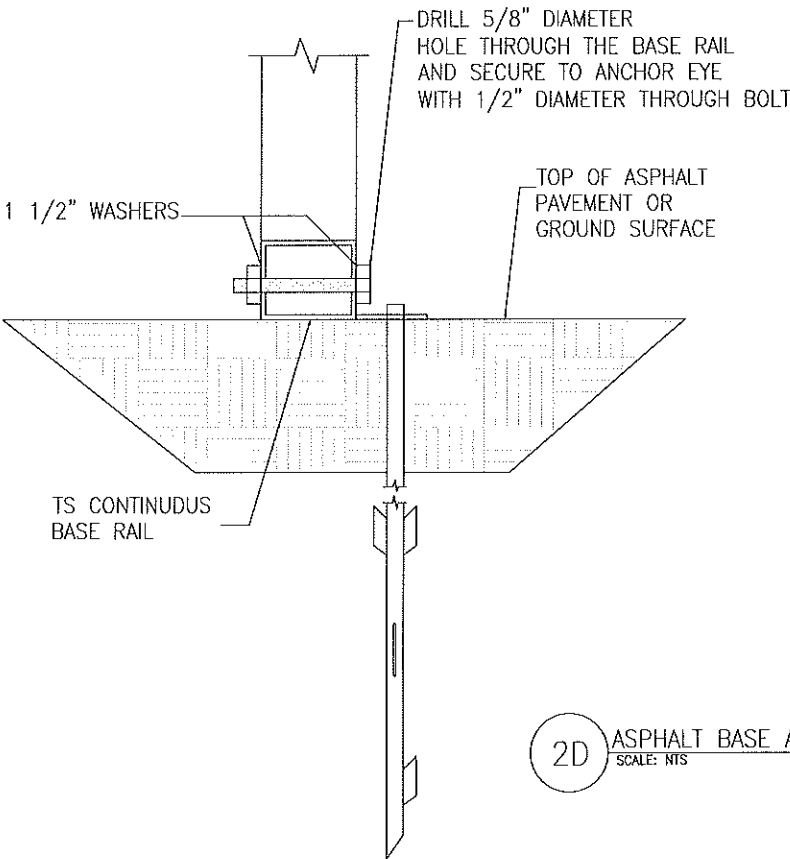
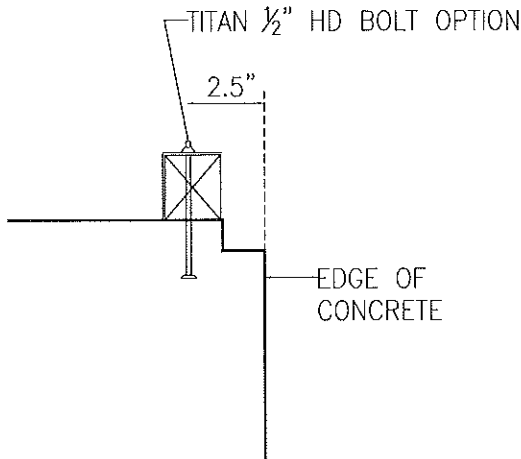
ADDITIONAL BASE RAIL ANCHORAGE OPTION



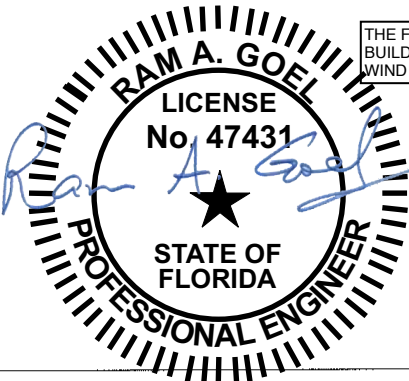
TYPICAL ANCHOR DETAIL WHEN
BASE RAIL IS NEAR EDGE OF CONCRETE
SCALE: N.T.S.



SECTION 1
SCALE: N.T.S. SK-14



2D ASPHALT BASE ANCHORAGE
SCALE: N.T.S.



THE FOLLOWING IS COMPLIANT TO THE FLORIDA
BUILDING CODE 2020, 7TH EDITION AND ASCE 7-16 FOR
WIND LOADS OF 180 MPH

NOTE:
1. THIS ITEM HAS BEEN SIGNED AND SEALED BY
RAM A. GOEL USING A DIGITAL SIGNATURE & DATE.
2. PRINTED COPIES OF THIS DOCUMENT ARE NOT
CONSIDERED SIGNED & SEALED. THIS SIGNATURE MUST
BE VERIFIED ON ANY ELECTRONIC COPIES.

THIS DRAWING IS AN INSTRUMENT OF SERVICE AND SHALL REMAIN THE PROPERTY OF THE
ENGINEER. AND SHALL NOT BE REPRODUCED, PUBLISHED OR USED IN ANY WAY WITHOUT
THE WRITTEN CONSENT OF THE ENGINEER. COPYRIGHT 2021. NOT PUBLISHED
THIS IS TO CERTIFY THAT I HAVE REVIEWED THIS PLAN AND FOUND IT TO BE IN COMPLIANCE
WITH CHAPTER 16 OF 2020 7TH EDITION FLORIDA BUILDING CODE AND APPLICABLE SUPPLEMENTS.

Dr. Ram A. Goel PE # 47431

COPIES OF THESE PLANS ARE NOT VALID UNLESS
EMBOSSED WITH THE SIGNING ENGINEER'S SEAL.



DR. RAM A. GOEL, PH.D., P.E.
F.P.E. 47431.
SONEY FM LLC
CORY LAKE PROFESSIONAL CENTER
10329 CROSS CREEK BLVD., SUITE P
TAMPA, FL 33647
Ph: 727-420-4796
Fax: (813) 972-2846
www.soneyfmlc.com

Job # 2173
Drawn By: S.K.
Checked By: R.G.

Issue Date: 08-18-21		
Revisions:		
No.	Date	Description
1		
2		
3		
4		

ADDITIONAL BASE RAIL ANCHORAGE OPTION

ELITE METAL MANUFACTURING, LLC
10121 88TH TRACE
LIVE OAK, FL 32060